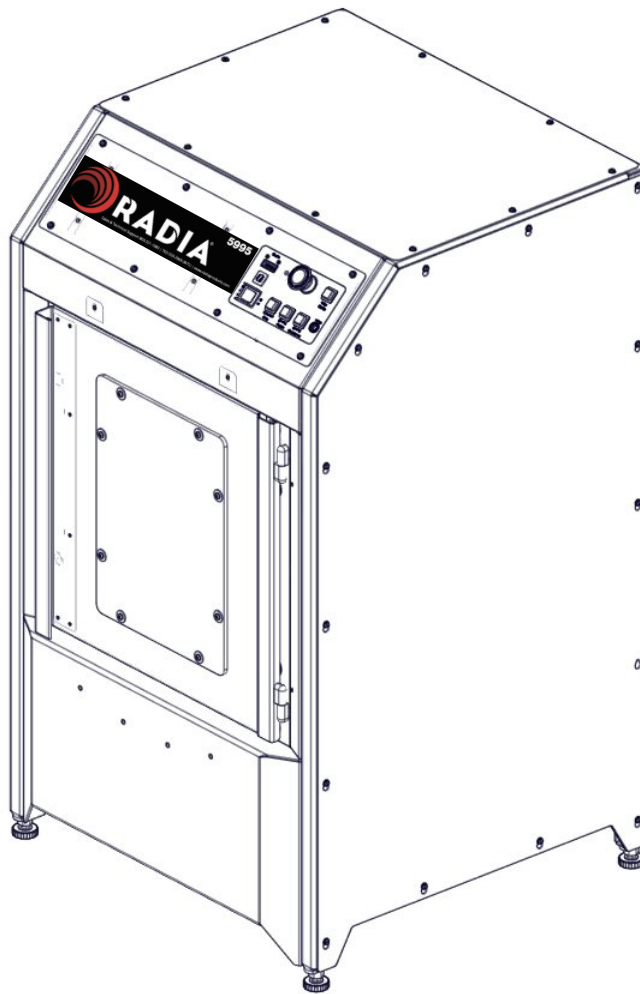


# Owner's Manual: 5995 Agitar

## Multi-Size Mixer

Models 0-5995






# Table of Contents

<b>1. Safety Information</b>	<b>3</b>	<b>7. Trouble Shooting</b>	<b>13</b>
1.1 Safety Precaution Labels	3-4		
1.2 Safety Precaution Summary	5	<b>8. Wiring Diagram</b>	<b>14</b>
<b>2. Introduction</b>	<b>6</b>	8.1 PB and PB-RR Models	14
2.1 Application	6	8.2 PBDL Model	15
2.2 Specifications	6	8.3 E5 and E6 Models	16
<b>3. Unpacking &amp; Install</b>	<b>7</b>	<b>9. Exploded Views</b>	<b>17</b>
3.1 Unpacking	7	9.1 Middle Frame and Main Drive	17
3.2 Prepare for Use	7	9.2 Shroud Assembly	18-19
3.3 Verify the machine is level	7	9.3 Door Lock Assembly	20
<b>4. Operation</b>	<b>8</b>	9.4 Clamp Frames	21-22
4.1 Control Panel	9	9.5 Control Panels	23
4.2 Install a 5 Gallon Pail	10	9.6 DL Electrical Components	24
4.3 Install Small Container(s)	10	9.7 Riser	25
<b>5. Operation</b>	<b>11</b>	<b>10. Ordering</b>	<b>26</b>
5.1 One Gallon Test	11	Replacement Parts	
5.2 E-Stop Test	11	<b>11. Warranty</b>	<b>27</b>
5.3 Five Gallon Test	11		
5.4 Door Lock Override	11		
<b>6. Care and Maintenance</b>	<b>12</b>		
6.1 Cleaning	12		
6.2 Maintenance Schedule	12		

# 1. Safety Information

**Review this owner's manual and read all warning labels on the machine prior to use.**

The three main safety notifications used in this manual and on the warning labels are **WARNING**, **CAUTION** and **NOTICE**. They have specific meanings and indicate the potential dangers from misuse of the machine.

	<p><b>"WARNING!"</b> indicates a hazardous situation, which, if not avoided, could result in death or serious injury. These serious injuries could include permanent loss of function or significant disfigurement, disability, considerable pain and suffering, amputations, severe burns, and loss or impairment of vision or hearing. Take all necessary precautions to avoid unnecessary injury.</p>
	<p><b>"CAUTION!"</b> indicates a hazardous situation, which, if not avoided, could result in minor or moderate injury.</p>
	<p><b>"NOTICE"</b> indicates practices that do not involve physical injury but may damage the machine.</p>

## 1.1 Safety Precaution Labels

IMPORTANT MAINTENANCE ITEMS

**WEEKLY:**

1) CLEAN BOTTOM PLATE WITH HOT SOAPY WATER TO REMOVE ANY DIRT & PAINT

---

**EVERY SIX MONTHS:**

1) LUBRICATE STRUTS (4) WITH MOBIL 634 SYNTHETIC OIL OR 3-IN-1 OIL

2) LUBRICATE CLAMPING SCREWS & NUTS WITH MULTI-PURPOSE SYNTHETIC GREASE (MOBIL 1 UNIVERSAL) GRADE NLGI #2

Part No. 1784612



WARNING  
ADVERTENCIA  
AVERTISSEMENT

MOVING PARTS INSIDE  
PARTES EN MOVIMIENTO  
PIE'CES EN MOVEMENT

-Do not open door until machine comes to complete stop; moving parts inside could cause serious injury.

-No abra la puerta hasta que la maquina se detenga completamente, las partes internas en movimiento pueden causar heridas graves.

- Ne pas ouvrir la porte avant que la machine ne s'arrête complètement. Pièces en mouvement à l'intérieur pourraient provoquer des blessures graves.

Part No. 1784963

Safety Information, Continued..

Safety Information, Continued..

# 1.1 Safety Precaution labels




**WARNING**  
**ADVERTENCIA**  
**AVERTISSEMENT**

-This machine is not explosion proof rated.  
-Review product label, Material safety Data Sheet, and HMIS rating of materials and exposures prior to mixing to determine potential hazards.  
-Use in dry and well-ventilated environment where dust and flammable vapors are not present; risk of physical injury exists if used in hazardous environment.  
-All containers must be properly sealed and void of leaks.

-Esta máquina no tiene la clasificación de prueba de explosión.  
-Revise la etiqueta del producto, la hoja informativa de datos de seguridad, su clasificación HMIS antes de mezclar y exposiciones de materiales peligrosos para determinar los peligros potenciales.  
-Use en un ambiente seco y bien ventilado donde polvo y vapores inflamables no estén presentes; Riesgo de daño físico existe si es utilizado en un ambiente peligrosos.  
-Todos los contenedores deben estar bien sellados y sin fugas.

-Cette machine n'est pas classé antidéflagrant.  
-Examen e'tiquette du produit, Fiche de données de sécurité, Et matériel HMIS cote et expositions, avant de faire le mélange pour déterminer les risques potentiels.  
-Utilisation a'sec et bien aere' environnement ou'la possie're et les vapeurs inflammables ne sont pas presents; risque de blessure physique existe si utilise' en environnement dangereux.  
-Tous les conteneurs doivent être concenablement scellés pour éviter les fuites.

Part No. 1780899



**WARNING**  
**ADVERTENCIA**  
**AVERTISSEMENT**

- Machine must be properly grounded before use; improper grounding could cause electric shock and injury.  
-Disconnect power cord before servicing, cleaning or removing any cover, and follow lockout/ tagout procedures in owner manual; failure to disconnect power could cause electric shock and injury.  
-Review Owners Manual before installing or operating.

- La maquinaria debe ser apoyada correctamente en el suelo antes de usar, el no apoyarla puede casuar choque eléctrico y daños.  
-Desconecte la energía antes de dar mantenimiento, limpiar o quitar cualquier cubierta, y siga los procedimientos de bloqueo/etiquetado del manual, Fallar en desconectar puede causar choque eléctrico y daños.  
- Revise el manual del usuario antes de instalar u operar.

- La machine doit e'tre correctement mis a' la terre avant de les utiliser mise a' la terre incorrecte peut provoquer un choc e'lectrique et de blessure.  
- De'branchez le cordon d'alimentation avant de proce'der a'l'entretien, le nettoyage ou le retrait des capots: suivez la proce'dure d'isolation/consignation proce'dures dans le manul de l'opre'rateur; E'chec de de'brancher la source d'alimentation peut provoquer shock and e'lectrique blessyres.  
-Re'examiner le fonctionnement manuel avant l'installation.

Part No. 1781570

**BEFORE RUNNING MACHINE...**

1....MAKE SURE THE CONTAINERS BEING MIXED ARE THE SAME HEIGHT  
2....POSITION CONTAINERS PROPERLY

**AVANT D'EXÉCUTER LA MACHINE...**

1....ASSUREZ-VOUS QUE LES CONTENEURS À ÊTRE MIXTES SONT À LA MÊME HAUTEUR  
2....POSITIONNEZ-VOUS LES CONTENEURS CORRECTEMENT



**WARNING**



**AVOID PLUGGING MULTIPLE ITEMS INTO POWER OUTLET WHEN USING THIS MACHINE!**

**EVITEZ DE BRANCHER PLUSIEURS ÉLÉMENTS DANS LA PRISE ÉLECTRIQUE LORSQUE VOUS UTILISEZ CETTE MACHINE!**

- FANS
- POWER STRIP OUTLETS
- HAIR DRYERS
- OTHER EQUIPMENT






Part No. 1784613

Safety Information, Continued..

Safety Information, Continued..

## 1.2 Safety Precaution Summary

### ⚠️ WARNING!

⚠️ **DO NOT** attempt to replace any damaged electrical wire or components. Improper replacement could result in electric shock and serious injury. Only a qualified service representative should attempt to repair or replace any damaged electrical components.

Review this owner's manual before installing or operating.

⚠️ The machine must be properly grounded prior to use. In the case of an electrical short circuit, grounding reduces the risk of electric shock by providing an escape wire for the electric current.

⚠️ The machine's power cord has a grounding wire with an appropriate grounding plug. This plug must be inserted into an electrical outlet that is properly installed and grounded according to all local codes and ordinances.

⚠️ If you must repair or replace the power cord or plug, **DO NOT** connect the grounding wire to either flat-blade terminal. The wire with insulation having an outer surface that is green (with or without yellow stripes) is the grounding wire.

⚠️ Check with a qualified electrician if you don't completely understand these grounding instructions, or if you are not sure whether the machine is properly grounded. **DO NOT** modify the plug provided; if it won't fit in the outlet, have a proper outlet installed by a qualified electrician.

⚠️ Disconnect the power cord before servicing, cleaning, or removing any covers.

Follow the lockout/tagout procedures of your company.

⚠️ **DO NOT** open the door until the machine comes to a complete stop.

⚠️ To avoid electric shock, don't get the timer, control panel, or wiring wet.

⚠️ This machine is not explosion proof rated. All containers must be properly sealed and void of leaks.

⚠️ Review product label, Material Safety Data Sheet, and HMIS rating of materials prior to mixing to determine potential hazards.

### 110V Units

Machines rated at 110v, 60 Hz are for use on a nominal 120V circuit. These machines have a grounding plug that looks like the one shown.

⚠️ **DO NOT** use solvent-based cleaners or thinners.

⚠️ Use in a dry and well-ventilated environment where dust and flammable vapors are not present.

⚠️ **WARNING:** This product may expose you to chemicals including DEHP, which is known to the State of California to cause cancer. For more information, go to [www.P65Warnings.ca.gov](http://www.P65Warnings.ca.gov)

### ⚠️ CAUTION!

⚠️ Keep the work area free of clutter and electrical cords.

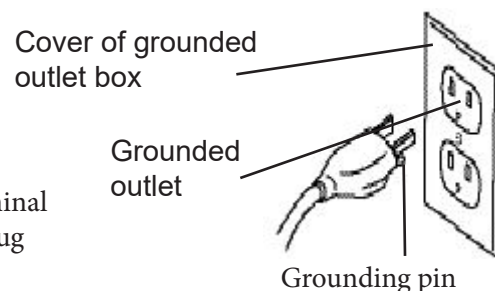
⚠️ Avoid extension cords. To minimize the risk of improper electrical grounding, extension cords are not recommended. If an extension cord is unavoidable, consult a qualified electrician to determine what type of extension cord will satisfy the grounding, current capacity, and other requirements of the particular situation.

⚠️ Use the proper power source. Refer to the machine data plate on the right side panel or section 2.2 specifications, in this manual.

⚠️ Keep customers away from the work area. The machine should be used only by properly trained individuals.

⚠️ Clamp the can carefully to ensure that it is held securely during the mixing cycle.

**Product safety labels should be inspected and cleaned periodically to maintain good legibility. Replace any labels that are no longer legible.**



## 2. Introduction

### 2.1 Application

Congratulations on your purchase of the 05995 Agitar Mixer. This machine is designed to accommodate standard five-gallon plastic or metal pails weighing up to 80 lb. (36.3 kg).

Understand your machine's features and proper operation to take full advantage of its capabilities.

Read this entire manual completely before operating the machine. Practice installing and removing a pail before mixing for the first time.

An optional Riser Leg Kit is available for additional height adjustments. Please see the Ordering section for additional information.

**Keep this manual for future reference.**

**Always follow all safety instructions!**

### 2.2 Specifications

**Unit Size:** **W** 28 in. (71 cm) **D** 28 in. (71 cm) **H** 46.5 in. (118.11 cm)

**Weight:** 520 lb. (236 kg)

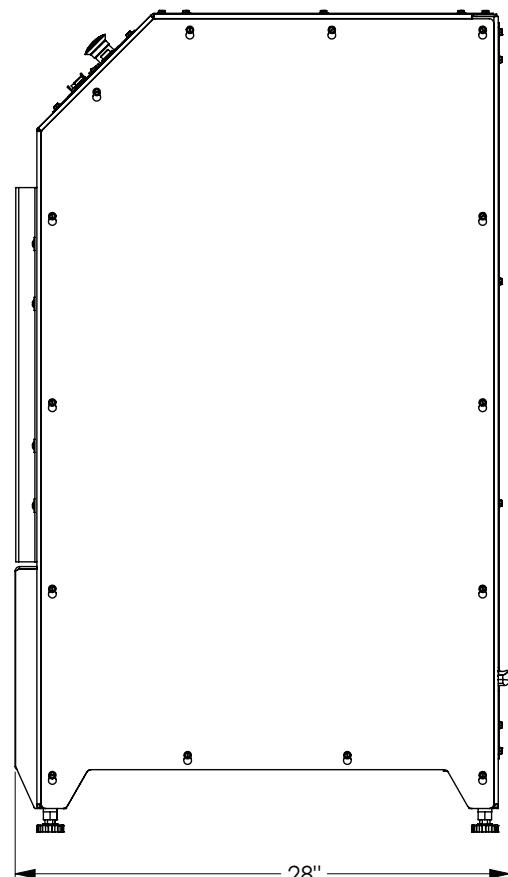
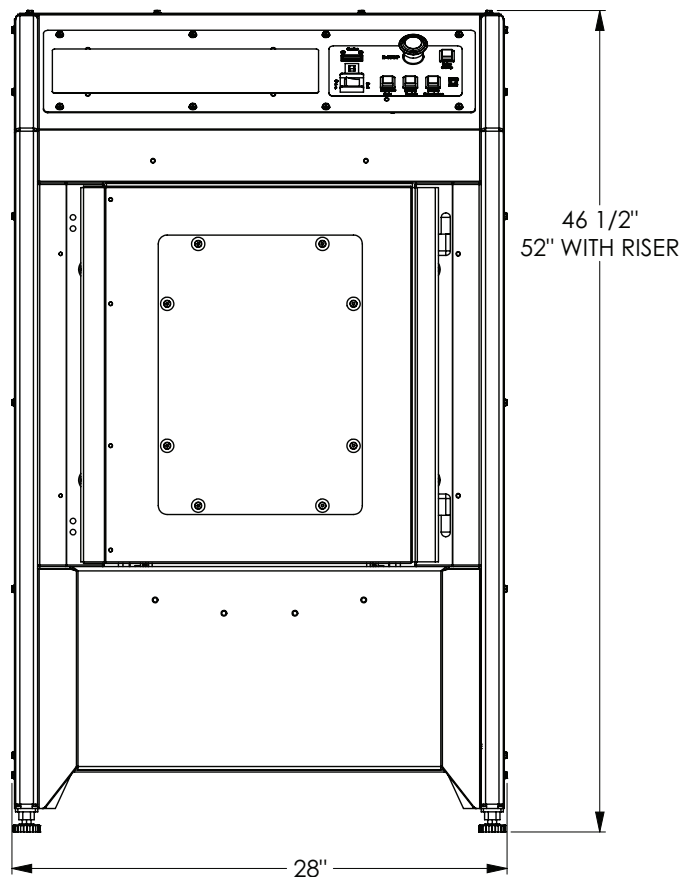
**Electric Service:**

- **05995-PB, PB-RR:** 110 V 60 Hz-Requires a 20 A dedicated circuit.
- **05995-E5:** 220 V 50 Hz Requires a 10 A dedicated circuit
- **05995-E6:** 220 V 60 Hz Requires a 10 A dedicated circuit

**Capacity:** 80 lb. (36.3 kg)

**Maximum and minimum can size:** 18"-2.5" Height and 14" diameter maximum

**Lift Height:** 13 in. (33 cm) to 16 in. (41.7 cm)



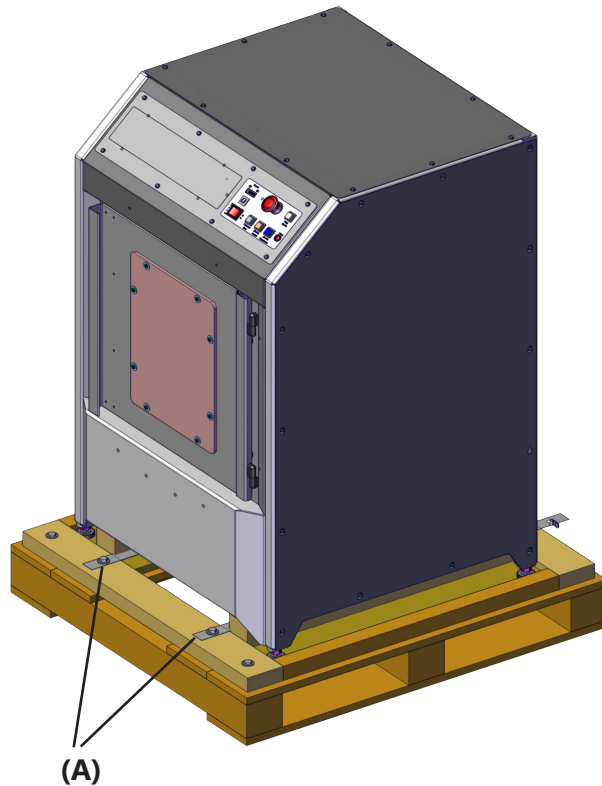
## 3. Unpacking & Install

### 3.1 Unpacking

The machine is shipped fully assembled. Remove the carton from the machine.

1. Unbolt the four strap **(A)** using a 9/16 in. socket or wrench.
2. Carefully lift the machine from the pallet.
3. Using a pallet jack or a forklift, gently position the machine on a firm, level surface.

**!** Do not run the machine on the pallet. Do not run the machine without removing the straps and all other shipping materials. Failure to do so will result in serious damage to the machine and void the warranty.



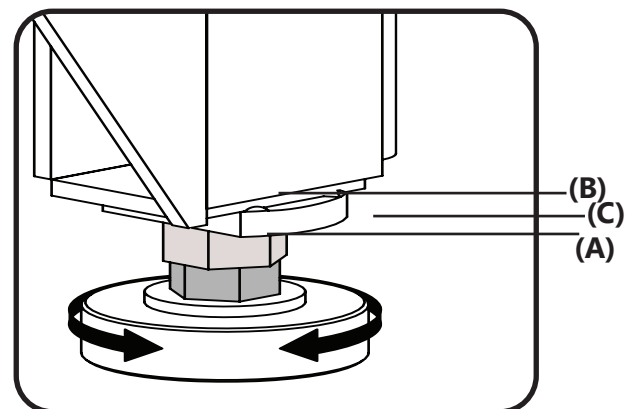
### 3.2 Prepare for Use

**IMPORTANT:** Before operating the machine:

1. Follow the electrical connection instructions described in section 1.2 and 2.2
2. Turn the machine on.
3. Push the E-STOP and unplug the machine when the top plate reaches the upmost position.
4. Remove any remaining packing material, including the wood clamping blocks.
5. Verify that the machine is level.

### 3.3 Verify the Machine is Level

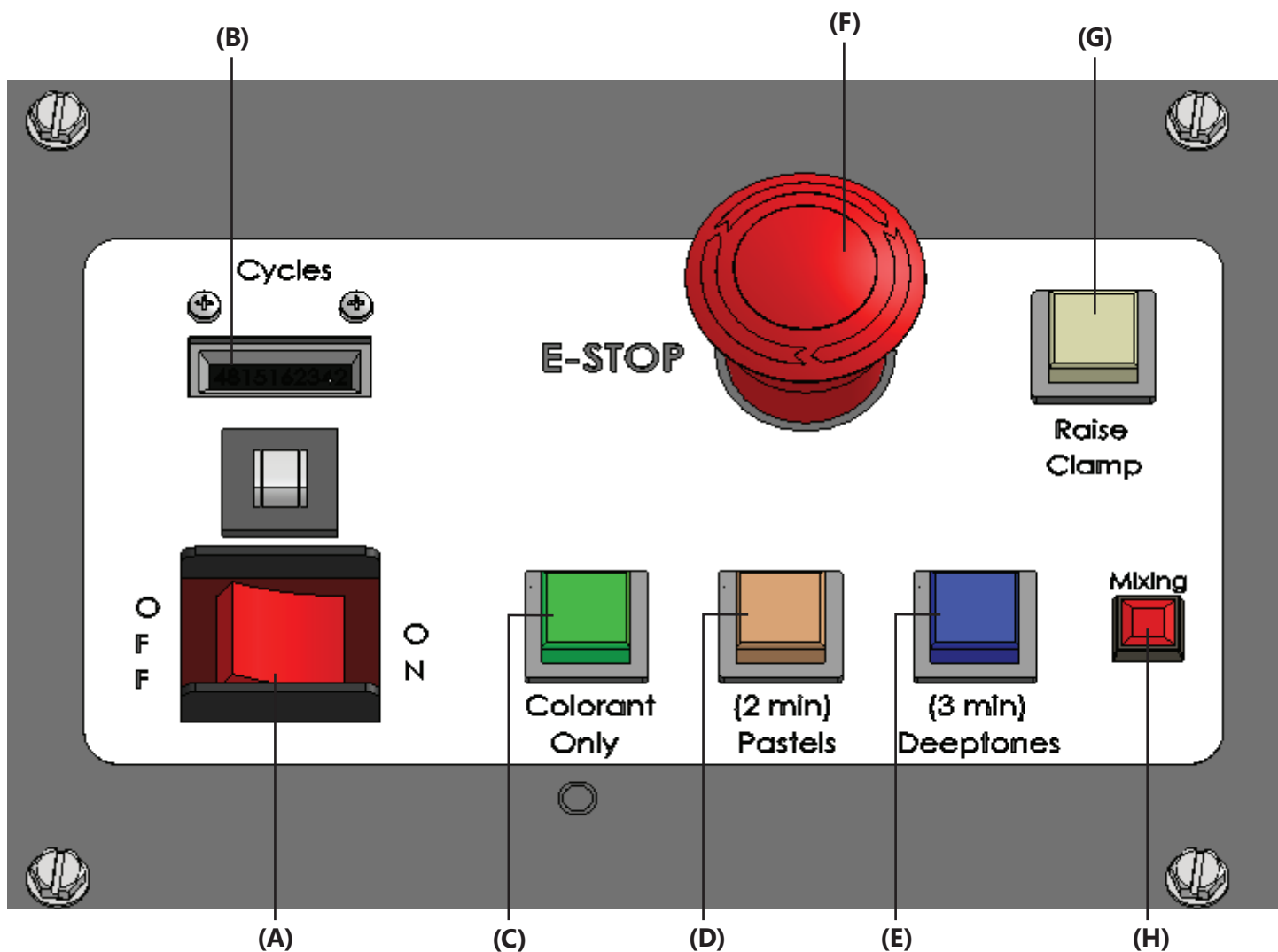
1. Clamp a five-gallon pail in the machine as per the instructions in Section 4.1, Install a Single Pail.
2. Turn the machine on (refer to section 4.3, Run a Mix Cycle).
3. Adjust any feet under which a piece of paper can fit.
  - a. Clamp the foot hex drive **(A)**.
  - b. Loosen the jam nuts **(B)**.
  - c. Turn the foot **(C)** to adjust.
  - d. Tighten the jam nut **(B)** when the foot makes full contact with the floor.
4. Repeat with any additional feet that may still need adjustment.



## 4. Operation

### 4.1 Control Panel

- **Power Switch (A):** Switch to turn the power on or off.
- **Cycle Counter (B):** Displays the total number of cycles the machine has performed.
- **Colorant Only (C):** Short cycle of 30 seconds.
- **Two-minute mix cycle (D):** Push to set a two-minute cycle.
- **Three-Minute Cycle (E):** Push to set a three-minute cycle.
- **E-Stop (F):** Only use to immediately cut the power to the machine.
- **Raise Clamp (G):** Press to raise the clamp to the next height level.
- **Mixing (H):** Indicates when a cycle is in progress.





..Operation, Continued

## 4.2 Install a 5 Gallon Pail

**⚠ DO NOT** run the machine without a container in place.

**⚠ DO NOT** mix more than 80 lb. (36.3 kg).

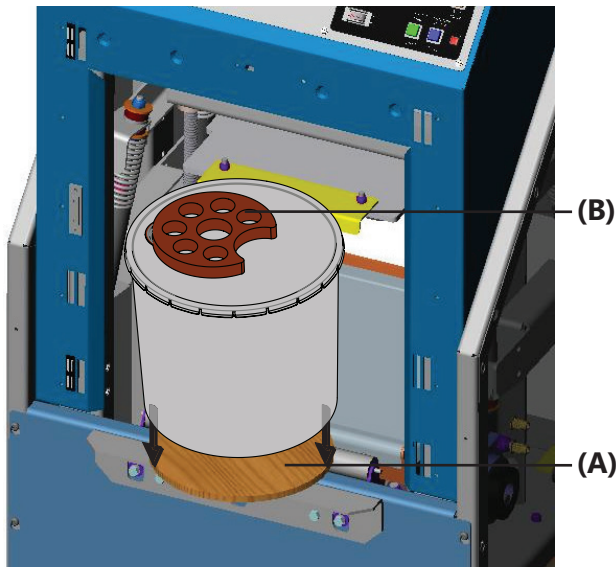
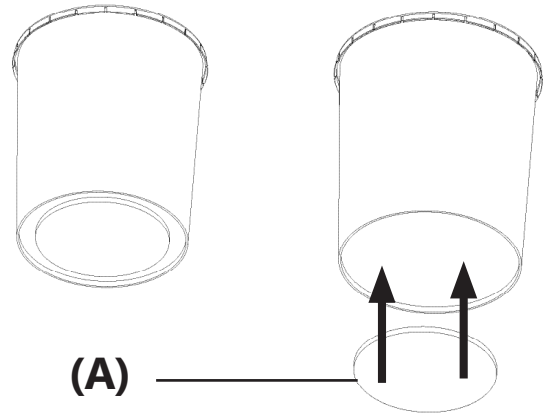
### INSTALL A 5 GALLON METAL PAIL:

1. Raise the top plate enough to allow room for a 5 gallon pail.
2. Open the machine door.
3. Position a wooden disk **(A) 9783877** (for metal pails only) on the ledge and place the metal pail over the disk so it fits inside the bottom of the pail.

Place a foam pad **(B) 9783864** at the top of the pail. See below for proper positioning.

4. Slide the pail with the foam pad **(B)** and wooden disk **(A)** onto the lower clamp.
5. Close the cabinet door and start the machine.

**⚠ To avoid damage to the pail and machine! Be sure the wooden disk is properly seated in the recess under the pail.**



Type of Pail	Example
<b>Metal Pail—Screw Top</b> Center the foam pad on top of the pail. Be sure the cutout fits near the cap.	
<b>Metal Pail—Snap-In Plug</b> Cover the plug with the foam cover. Be sure the cutout faces the center.	
<b>Plastic Pail—Screw Top</b> Center the foam pad on top of the pail. Be sure the cutout fits snug around the cap.	
<b>Plastic Pail—Snap-In Plug</b> Cover the plug with the foam cover. Be sure the cutout faces the center.	

### INSTALL A 5 GALLON PLASTIC PAIL:

Follow steps 1 - 4, but do not use the wooden disk **(A)** under the pail.

Operation, Continued..

..Operation, Continued

## 4.3 Install Small, Containers

**!** Do not load containers of different heights into the mixer. Shorter containers will come loose during use and damage the shaker and containers.

The machine can mix up to four one-gallon **OR** four one-pint containers at a time. Four four-liter containers will not fit.

1. Arrange the containers as close as possible to each other and in the **center** of the lower clamp plate **(A)**.
2. Close the door and start the machine.



## 4.4 Run a Mix Cycle

If there is excessive noise or pail shuffling during the mix cycle, determine if the wood disk or pad should be used with the pail type being mixed.

Because pails can be dimensionally different from each manufacturer, the pad or wooden disk may not be required.

Please make note of what pails require the use of the pad and wood disk along, with those that do not.

Never mix damaged metal cans.

Always inspect each can prior to mixing for any dents along the bottom ridge and side walls. Mixing a container with dents can cause the clamp to release, or crush a container during a mix cycle.

1. Open the cabinet door and load the container(s) as illustrated in either section 4.2, Install a Single Pail, or 4.3, Install multiple containers.
2. Turn the power switch to ON.
3. Be sure the emergency stop button is in the ON position.
4. Press the desired timer button.
5. Verify that the MIXING light comes on while the upper clamp lowers and secures the pail(s). The machine will mix for the amount of time set on the timer.
6. Open the door when the cycle is complete, the MIXING light is off, and the upper clamp raises.
  - i. Stop the cycle early, if desired, by pushing either the E-STOP button, or the RAISE CLAMP button.
  - ii. Press the RAISE CLAMP button once to retract the upper clamp further, or hold it for two seconds to retract the clamp to its home position.
7. Remove the pail(s) of mixed paint.

## 5. Operations and Tests

### 5.1 One Gallon Test

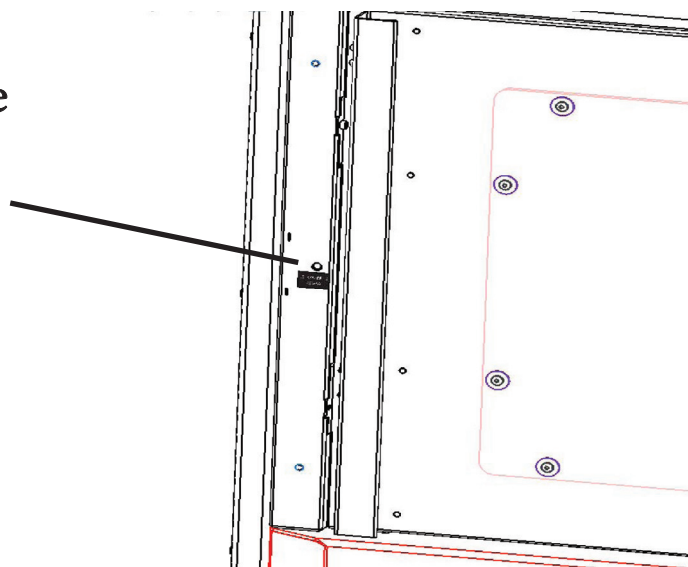
1. Load and position two one-gallon containers as per section 4.3, Install Containers.
2. Release the E-STOP and switch the power to ON.
3. Press the green timer button. The clamp will automatically travel down, clamp on the cans, and begin mixing. The cycles should be smooth. If there is noticeable vibration, press the emergency stop switch and see the troubleshooting section.
4. After the mix cycle ends, the clamp will retract just above the top of the gallon cans.

### 5.3 Five Gallon Tests

1. Load a five-gallon pail as per section 4.2, Install a Single Pail.
2. Press the green timer button and let the machine run for a full cycle. Again, watch the machine closely for vibration that may indicate an uneven condition.
3. Remove the pail when the cycle ends and the clamp has retracted.

### 5.4 Manual Door Lock Override

1. Gently insert a small flat head screw driver into latch hole.
2. Lift screw handle to pivot tip down and disengage lock.



### 5.2 E-STOP Test

1. Load a container per Section 4.2, Install Containers.
2. Press the green, yellow, or blue button to initiate a mixing cycle.
3. After several seconds of mixing, press the E-STOP switch. The machine will stop running. Pull the E-STOP back out. The red mixing light will begin to flash, indicating an interruption in the mix cycle. After a pause, the top plate will unclamp. This function will only work if the emergency stop is activated, or if the power switch is turned off during a mix cycle.
4. Remove container.

## 6. Care and Maintenance

### 6.1 Cleaning

**⚠** Always unplug the power cord before performing cleaning and Maintenance tasks.

**⚠** Do not let paint dry on the upper and lower plate surfaces. Dried paint will diminish the clamping ability of the clamp frame.

#### CLEANING:

Keeping the machine clean is important for reliable operation.

- Colorant or base paint spilled on machine surfaces can be removed using lukewarm water and mild detergent for water-based/glycol colorants.
- To preserve the appearance of the machine, do not use abrasives to clean machine surfaces.
- Do not let paint dry on the lead screw threads. Wipe wet paint off immediately and re-grease the lead screws.

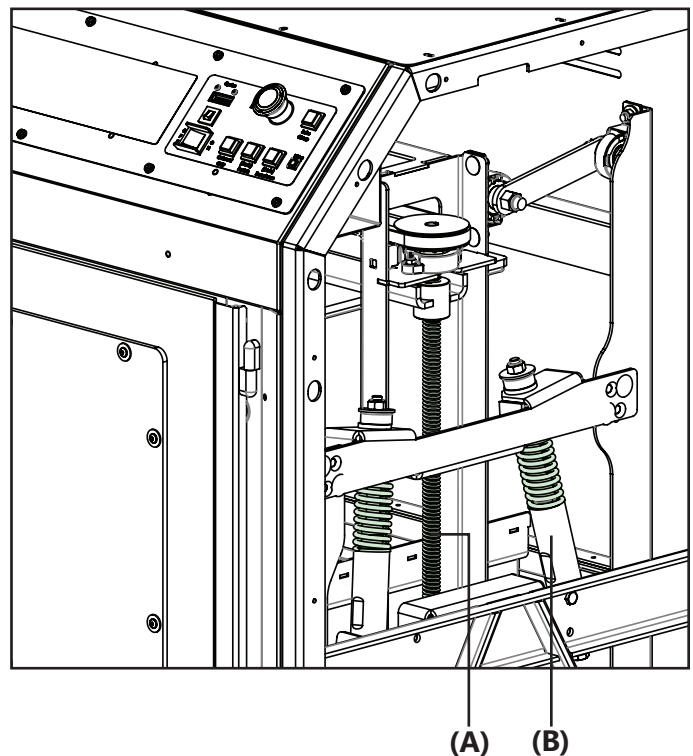
### 6.2 Maintenance

#### LUBRICATION:

Lubricate the machine according to the following schedule to ensure optimal performance and extend component life.

Lubrication		
Every 3 Months	Lead Screws (A) (2)	MULTI-PURPOSE SYNTHETIC GREASE (MOBIL 1 UNIVERSAL) GRADE NLGI #2
Every 6 Months	**Struts (B) (4)	MOBIL 634 SYNTHETIC OIL OR 3-IN-1 OIL

\*\*Apply oil to strut shaft and strut bushing. Rock the inner frame by hand to ensure oil flows into the strut body.

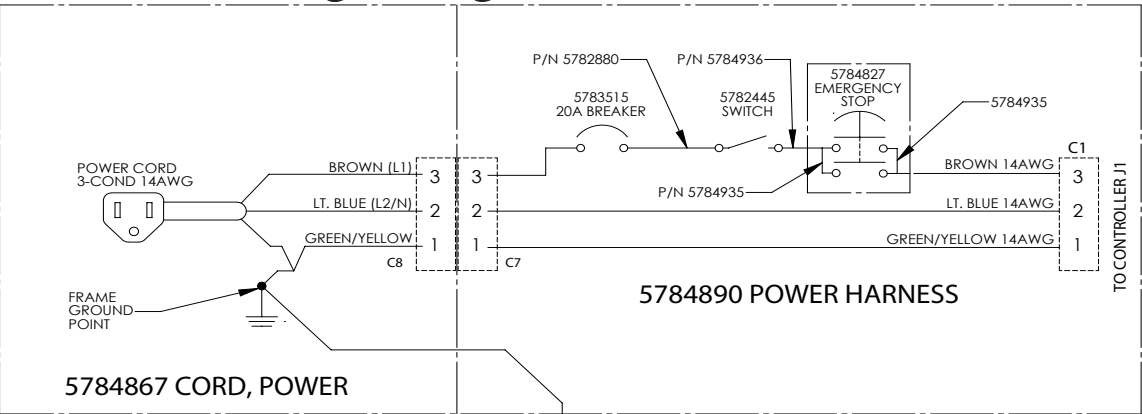


## 7. Troubleshooting

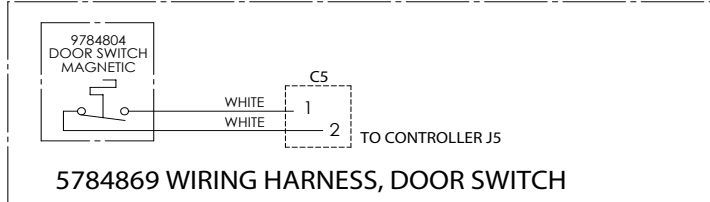
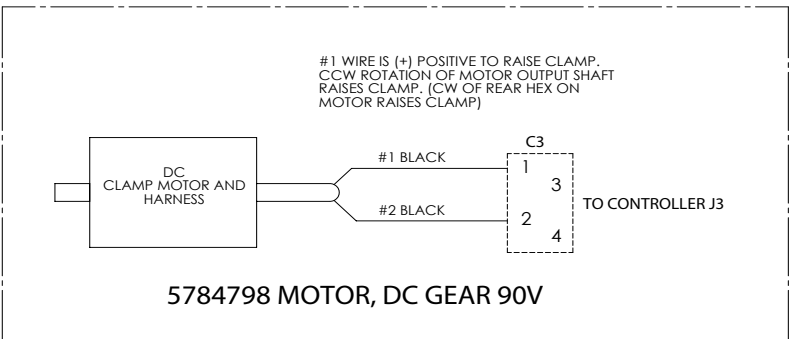
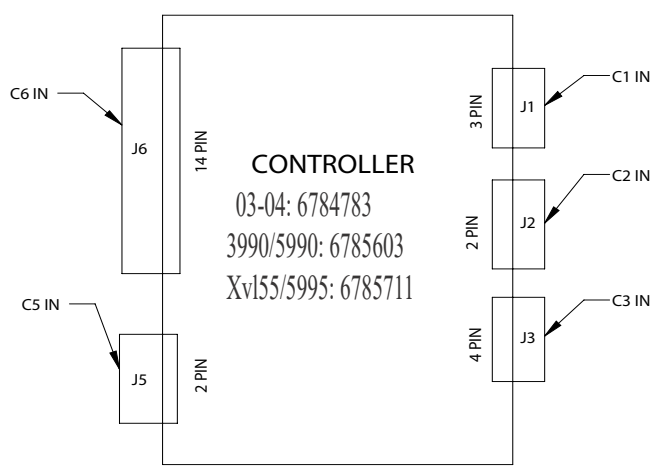
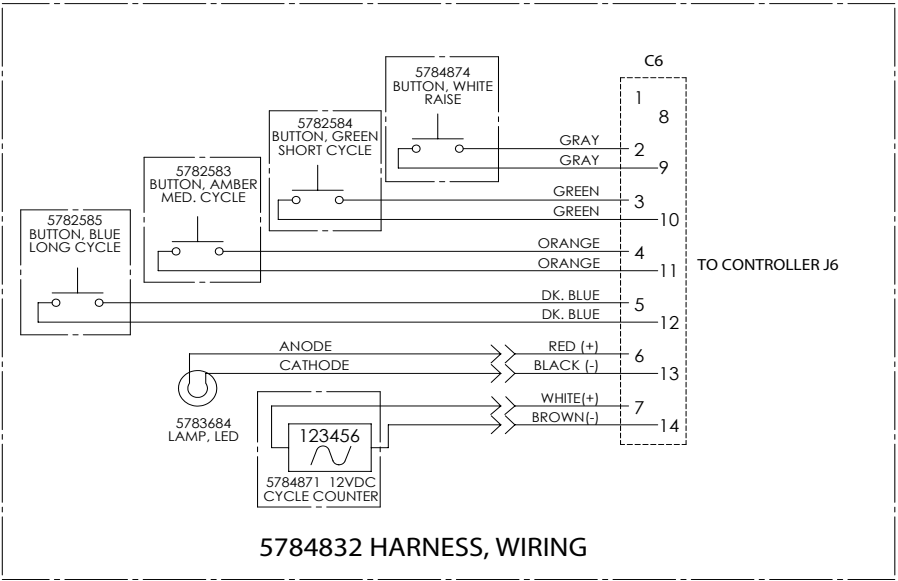
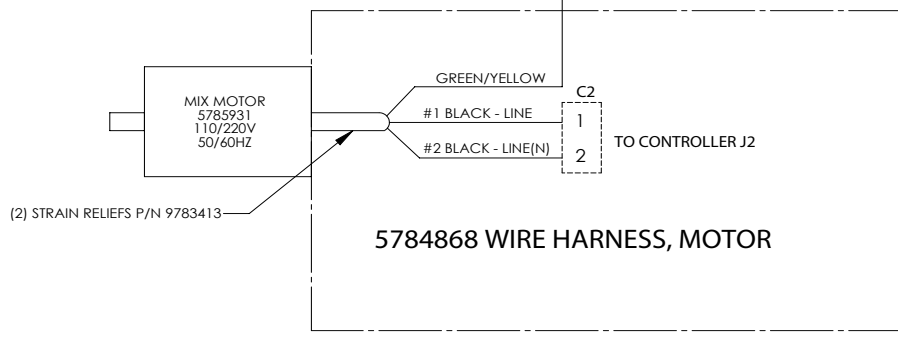
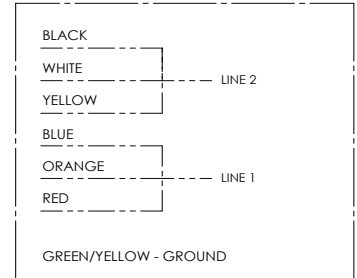
PROBLEM	CAUSE	REMEDY
Machine won't operate	Emergency switch activated	Turn switch knob 1/4-turn clockwise to disengage
	Power switch not on/circuit breaker tripped	Turn the power switch on, or reset the circuit breaker
	Machine door does not activate door switch	Replace the magnetic door switch
	Building circuit breaker or fuse blown	Reset breaker or replace fuse
	Power cord is damaged	The power cord must be replaced by the manufacturer, its service agent or a similarly qualified person in order to avoid a hazard
	Not connected to power source	Plug the cord into an appropriately grounded outlet
Pail moves inside the clamping plates	Top clamp pad worn	Replace pad
	Pail damaged	Replace pail
	Lead screw dirty or fouled	Clean and lubricate lead screw
	Clamp force needs adjustment	Contact Radia Customer Care
Motor hums but mixer won't run	Motor drive belt loose or off	Contact Radia Customer Care
	Faulty motor	
Motor fails to run, skips mix cycle	Low voltage	Plug the machine into a dedicated circuit or one with sufficient voltage
Clamp stuck	Cans loaded improperly or wire connection problem	Reverse DC motor by turning stud or replace or repair the faulty wire
Machine doesn't shut off at the end of a mixing cycle	Faulty controller	Contact Radia Customer Care
Machine doesn't shut off when the door is opened	Faulty magnetic door switch	Contact Radia Customer Care
Increasing mechanical noise	Bearings worn or damaged	Contact Radia Customer Care
	Foreign material under clamp frame	Remove foreign material
Noticeable vibration	Machine is not level	See section 3.3 for leveling instructions

Wiring Diagrams, Continued...

## 8. Wiring Diagram 8.1 PB and PB-RR Models

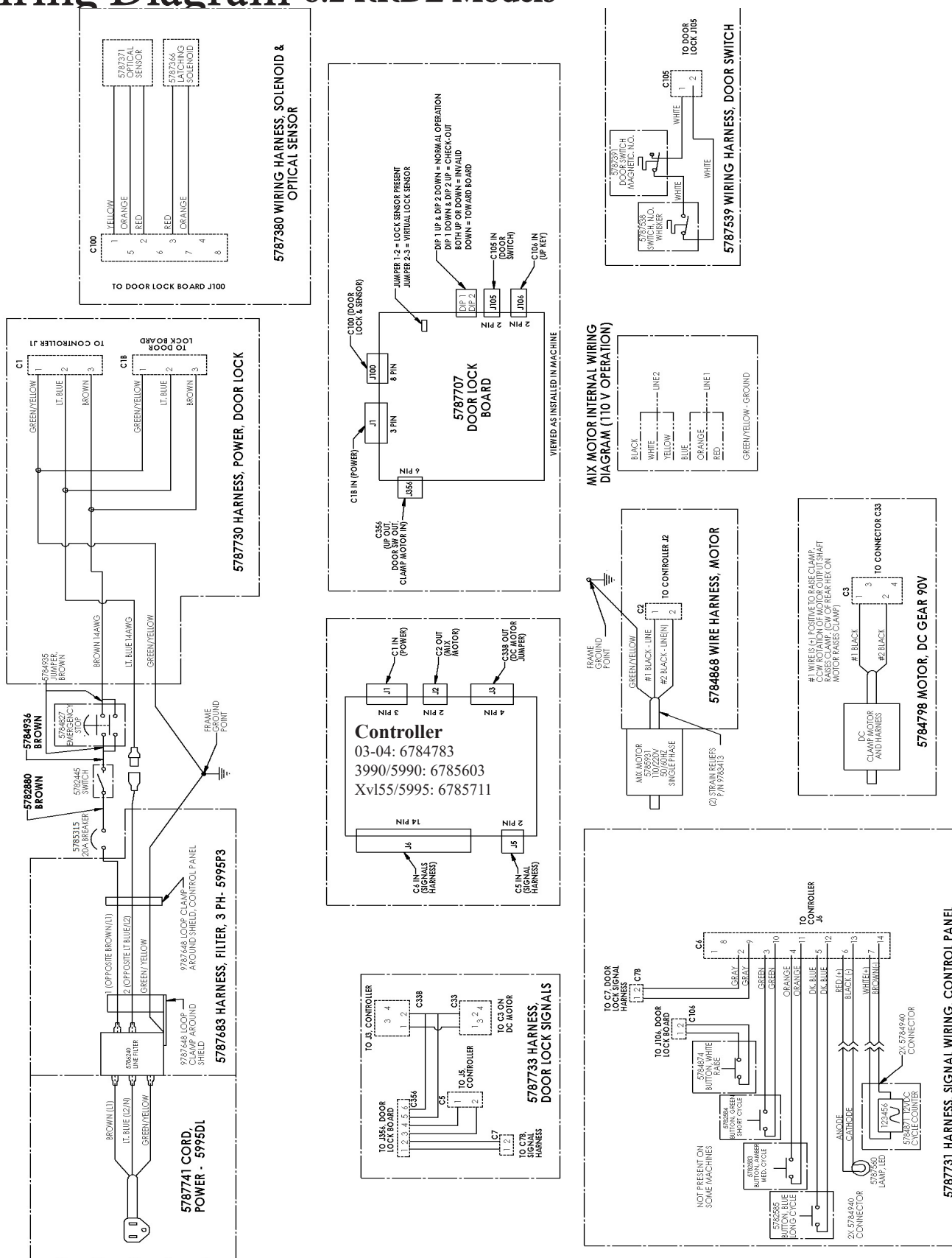


**MIX MOTOR INTERNAL WIRING DIAGRAM (110 V OPERATION)**



Wiring Diagrams, Continued...

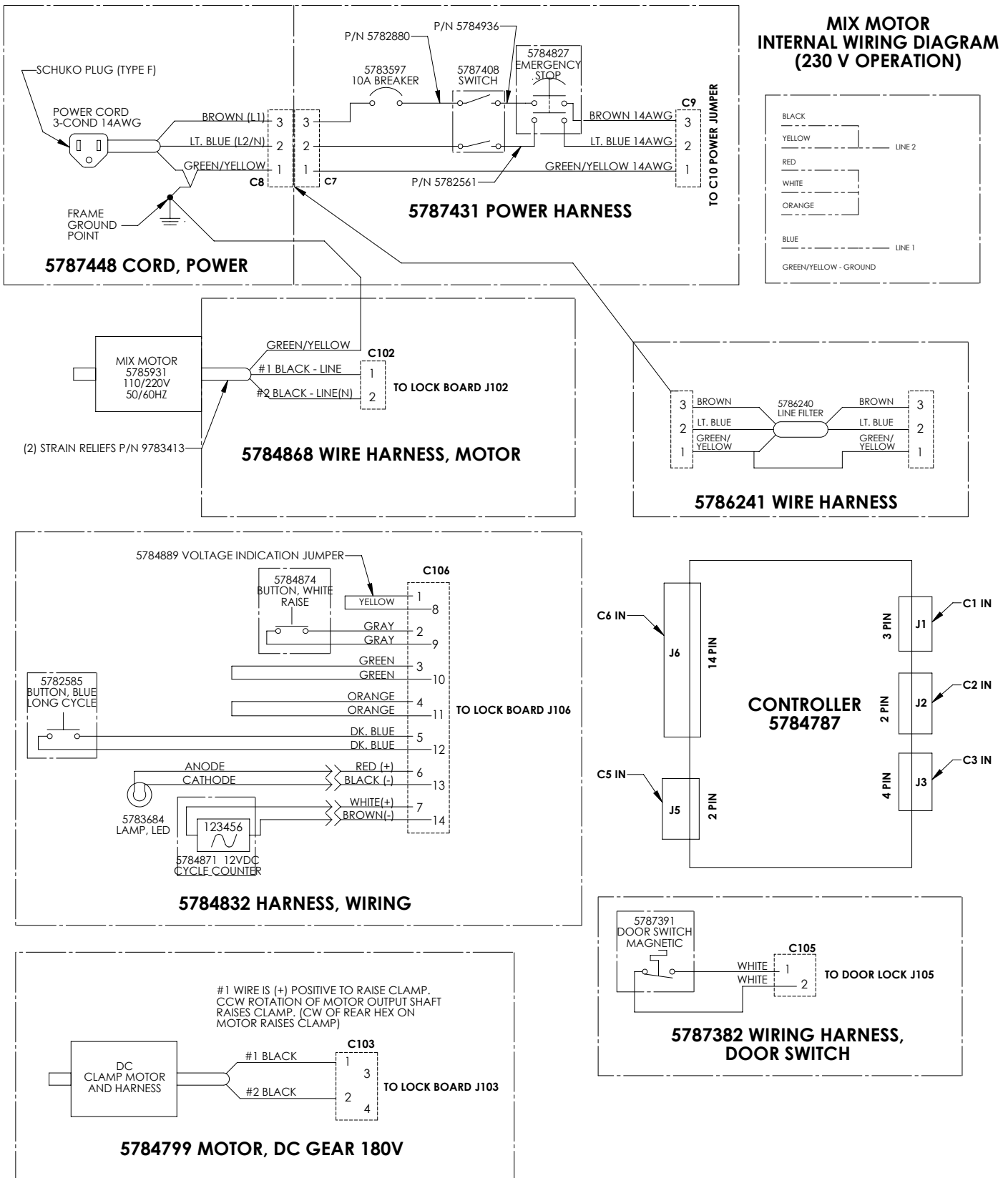
## 8. Wiring Diagram 8.2 RRD L Models



Wiring Diagrams, Continued...

...Wiring Diagrams, Continued

## 8. Wiring Diagram 8.3 E5 and E6 Models

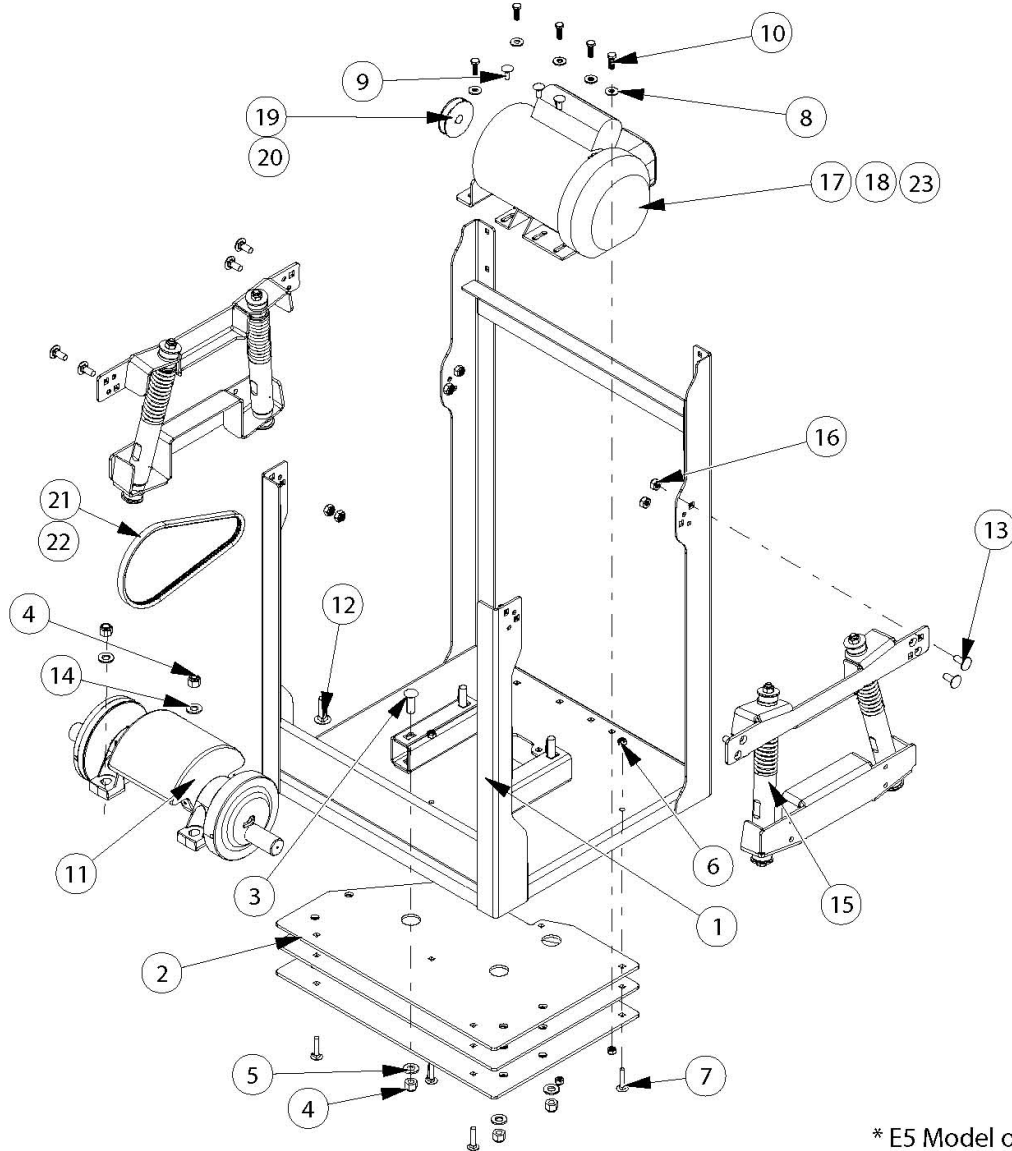




...Exploded Views, Continued

## 9. Exploded Views

### 9.1 Middle Frame and Main Drive: Models - **PB, PB-RR, E5, E6, DL**



\* E5 Model only

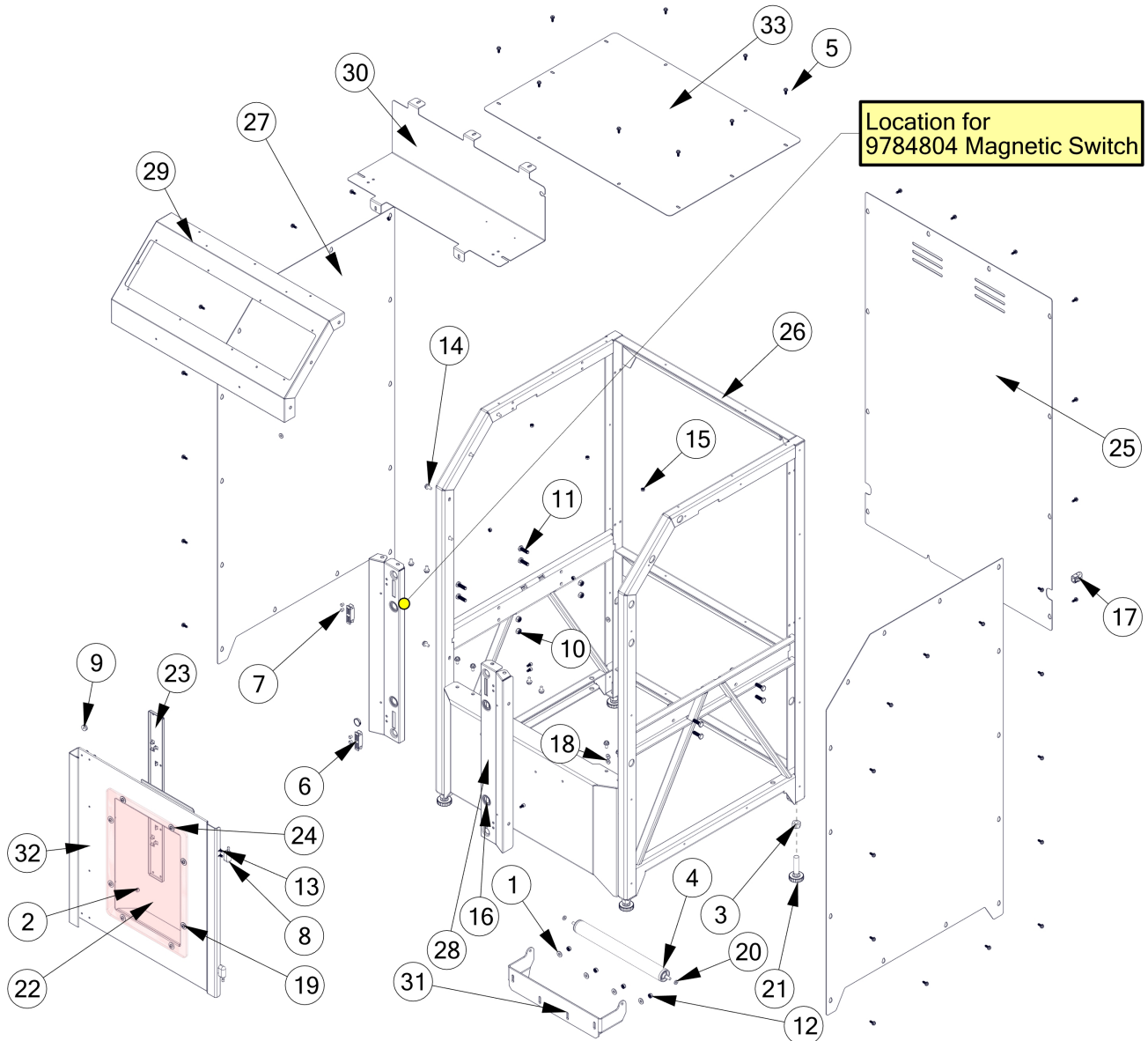
BOM ID	PART #	DESCRIPTION	BOM ID	PART #	DESCRIPTION
1	9784759	FRAME WELDMENT, MIDDLE 5995	12	9783372	CARRIAGE BOLT 1/2-13 X 1.75
2	9783284	PLATE, BALANCE 5900, 10, 90	13	9784855	CARRIAGE BOLT M10-1.50 X 25MM
3	9783372	SCR, CARRIAGE, 1/2-13 X 1.75 GR5	14	9784746	WASHER, FLAT, 1/2 HARDENED
4	9783383	NUT 1/2 NYLON LOCK	15	6784972	KIT, STRUT MOUNT REPLACEMENT MS PLATFO
5	9784746	WASHER, FLAT, 1/2 HARDENED	16	9784835	NUT, M10-1.5 NYLON LOCK, CL8
6	9784843	NUT, M8 X 1.25 NYLON LOCK, CL 8	17*	6786031	KIT, MOTOR, 1HP 50HZ
7	9784852	CARRIAGE BOLT M8-1.25 X 40MM	18	6784964	KIT, MS PLATFORM 1HP MOTOR REPLACEMENT
8	9100023	WASHER, FLAT 5/16 USS	19	8784155	PULLEY, MOTOR 2.50 PD 60HZ, MACH
9	9784854	CARRIAGE BOLT M8-1.25 X 20MM	20*	9784906	PULLEY, 50HZ MOTOR 5995
10	9784853	SCREW, HEX M8-1.25 X 25 MM	21	6784960	KIT, BELT REPLACEMENT MS PLATFORM
11	8785119	COUNTERWEIGHT ASSY, OS	22*	9784948	BELT, VEE, COGGED 50HZ 5995 50HZ

**PART NUMBERS LISTED MAY ONLY BE AVAILABLE IN KIT FORM OR AS AN ASSEMBLY**

Exploded Views, Continued...

...Exploded Views, Continued

## 9.2 Shroud Assembly (PB, PB-RR, E5, E6)



BOM ID	PART #	DESCRIPTION
1	9760514	WASHER, 1/4 SAE 0.281 ID
2	9781383	NUT, NYLON LOCK 10-32
3	9781711	NUT 1/2-13
4	9782520	ROLLER
5	9783385	SCREW, 10-32 SHWH TAP
6	9783465	MAGNET
7	9783672	PLUG, 0.25 HOLE DIAMETER HEYCO #2603
8	9784771	HINGE, DOOR 5995
9	9784803	MAGNET FOR SWITCH
10	9784843	NUT, M8-1.25 NYLON LOCK, CL 8
11	9784853	SCREW, HEX M8-1.25 X 25MM
12	9784856	NUT, KEPS M6-1.0
13	9784857	SCREW, SOCKET HEAD TORX, 10-32 X 0.38
14	9784859	SCREW, HEX HD, SEMS M6-1.0 X 12 MM
15	9784860	NUT, KEPS M5-0.8
16	9784863	PLUG, HOLE, 0.75
17	9784886	STRAIN RELIEF, POWER CORD

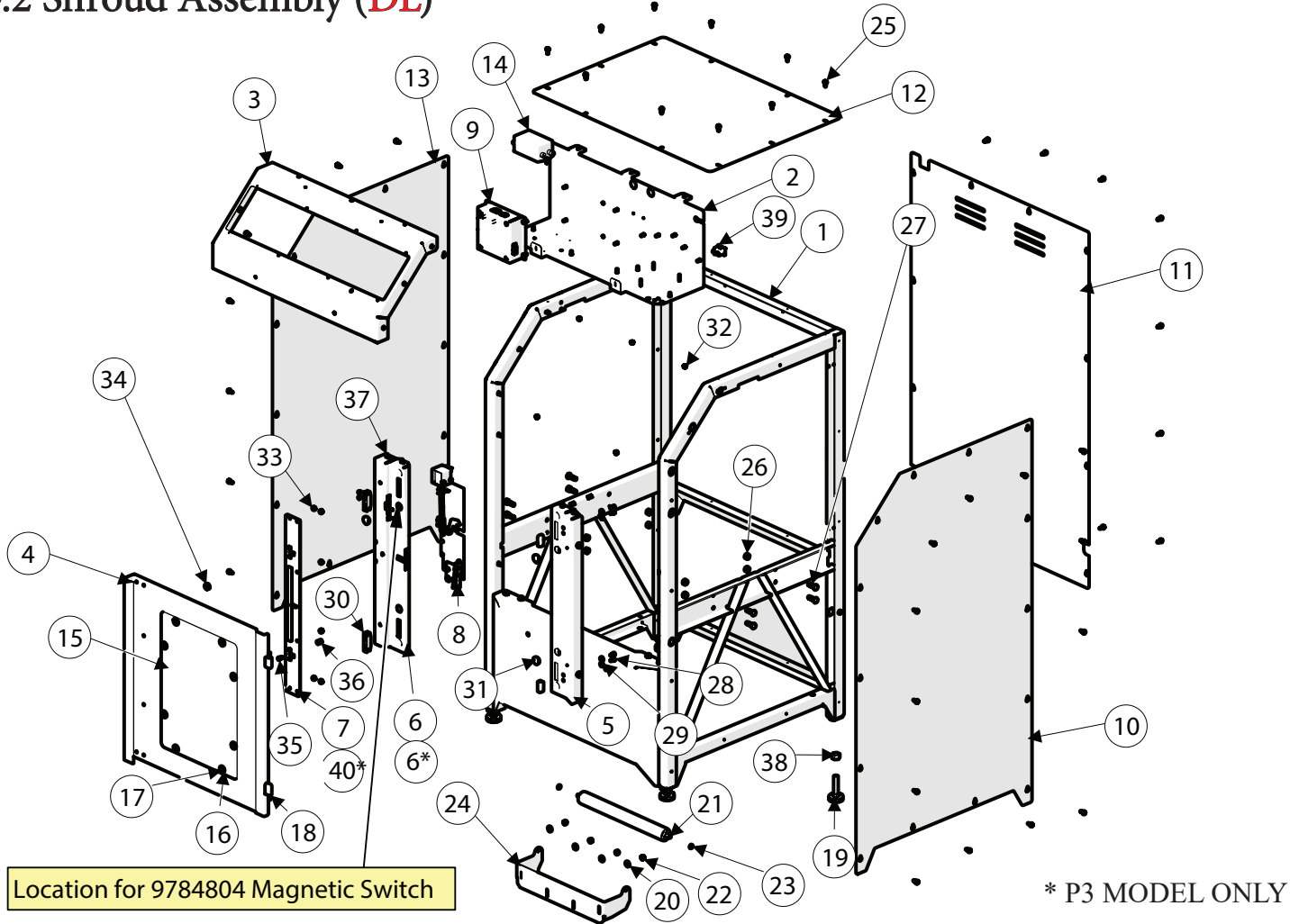
BOM ID	PART #	DESCRIPTION
18	9784995	WASHER, 0.203 ID X 5.00 OD X 0.093T
19	9785014	SCREW, BUTTON HD CAP 10-32 X 0.625
20	9785537	WASHER, NEO, 0.195 ID X 0.438 OD X 0.093T
21	9785721	FOOT, GLIDER 1/2-13
22	9785909	GLASS PANEL, DOOR, AGITAR
23	9785910	PLATE, STRIKE, DOOR, AGITAR
24	9785956	WASHER, FENDER #10, 0.203 X 0.75 OD
25	9787199	PANEL, BACK, 5995
26	9787200	FRAME WELDMENT, EXTERIOR 5995
27	9787201	PANEL, SIDE 5995
28	9787202	DOOR MOUNT 5995
29	9787203	MOUNT, CONTROL PANEL 5995
30	9787204	GUARD, CONTROLS 5995
31	9787205	BRACKET, ROLLER 5995
32	9787206	PANEL, DOOR 5995
33	9787210	PANEL, TOP 5995

**PART NUMBERS LISTED MAY ONLY BE AVAILABLE IN KIT FORM OR AS AN ASSEMBLY**

Exploded Views, Continued...

...Exploded Views, Continued

## 9.2 Shroud Assembly (DL)



Location for 9784804 Magnetic Switch

\* P3 MODEL ONLY

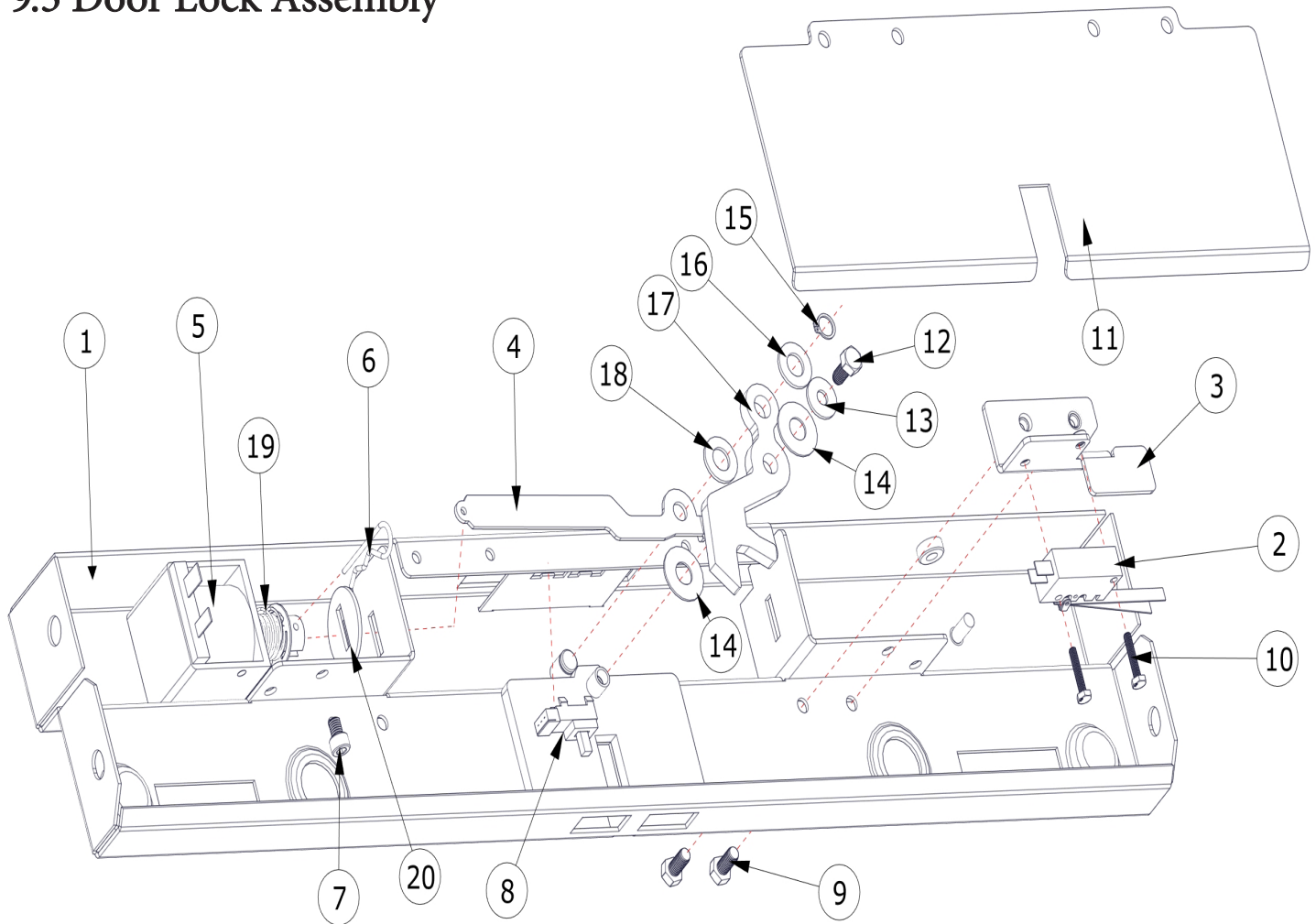
BOM ID	PART #	DESCRIPTION	BOM ID	PART #	DESCRIPTION
1	9787200	FRAME WELDMENT, EXTERIOR 5995	21	9782520	ROLLER
2	9787419	GUARD, CONTROLS 5995P3 & DL	22	9784856	NUT, KEPS M6-1.0
3	9787203	MOUNT, CONTROL PANEL 5995	23	9785537	WASHER, NEO, 0.195 ID X 0.438 OD X 0.093T
4	9787206	PANEL, DOOR 5995	24	9787205	BRACKET, ROLLER 5995
5	9787202	DOOR MOUNT 5995	25	9783385	SCREW, 10-32 SHWH TAP
6	9787409	DOOR MOUNT, LOCK, 5995 DL	26	9784843	NUT, M8-1.25 NYLON LOCK, CL8
6*	9787202	DOOR MOUNT 5995	27	9784853	SCREW, HEX M8-1.25 X 25MM
7	9787418	PLATE, STRIKE, 5995 DL	28	9784857	SCREW, SOCKET HEAD TORX, 10-32 X 0.38
8	NO LONGER AVAILABLE	ASSY, DOOR LOCK 5995PBDL	29	9784995	WASHER, 0.203 ID X .50 OD X .093T
9	9787708	ENCLOSURE, DOOR LOCK MID CNTRLR 5995DL	30	9783465	MAGNET, MS PLATFORM
10	9787201	PANEL, SIDE 5995	31	9784863	PLUG, HOLE 0.75
11	9787199	PANEL, BACK 5995	32	9784860	NUT, KEPS M5-0.8
12	9787210	PANEL, TOP 5995	33	9781383	NUT, NYLON LOCK 10-32
13	9787201	PANEL, SIDE 5995	34	9784803	MAGNET FOR SWITCH
14	5786240	LINE FILTER, 15 AMP, 120.250V, 50-60HZ	35	9787425	SCREW, HEX M5-0.8 X 10MM
15	9785909	GLASS PANEL, DOOR, AGITAR	36	9787425	SCREW, HEX M5-0.8 X 10MM
16	9785956	WASHER, FENDER #10 0.203 X 0.75 OD	37	9787722	HEX, THRD STAND OFF, HEX, ALUM.
17	9785014	SCREW, BUTTON HD CAP 10-32 X 0.625	38	9784859	SCREW, HEX HD, SEMS M6-1.0 X 12MM
18	9784771	HINGE, DOOR 5995	39	5787711	ELECTRICAL INLET, PLUG, 5995 E5CE
19	9785721	FOOT, GLIDER	40*	9785910	PLATE, STRIKE, DOOR, AGITAR
20	9760514	WASHER 1/4 SAE 0.281 ID			

**PART NUMBERS LISTED MAY ONLY BE AVAILABLE IN KIT FORM OR AS AN ASSEMBLY**

Exploded Views, Continued...

...Exploded Views, Continued

## 9.3 Door Lock Assembly



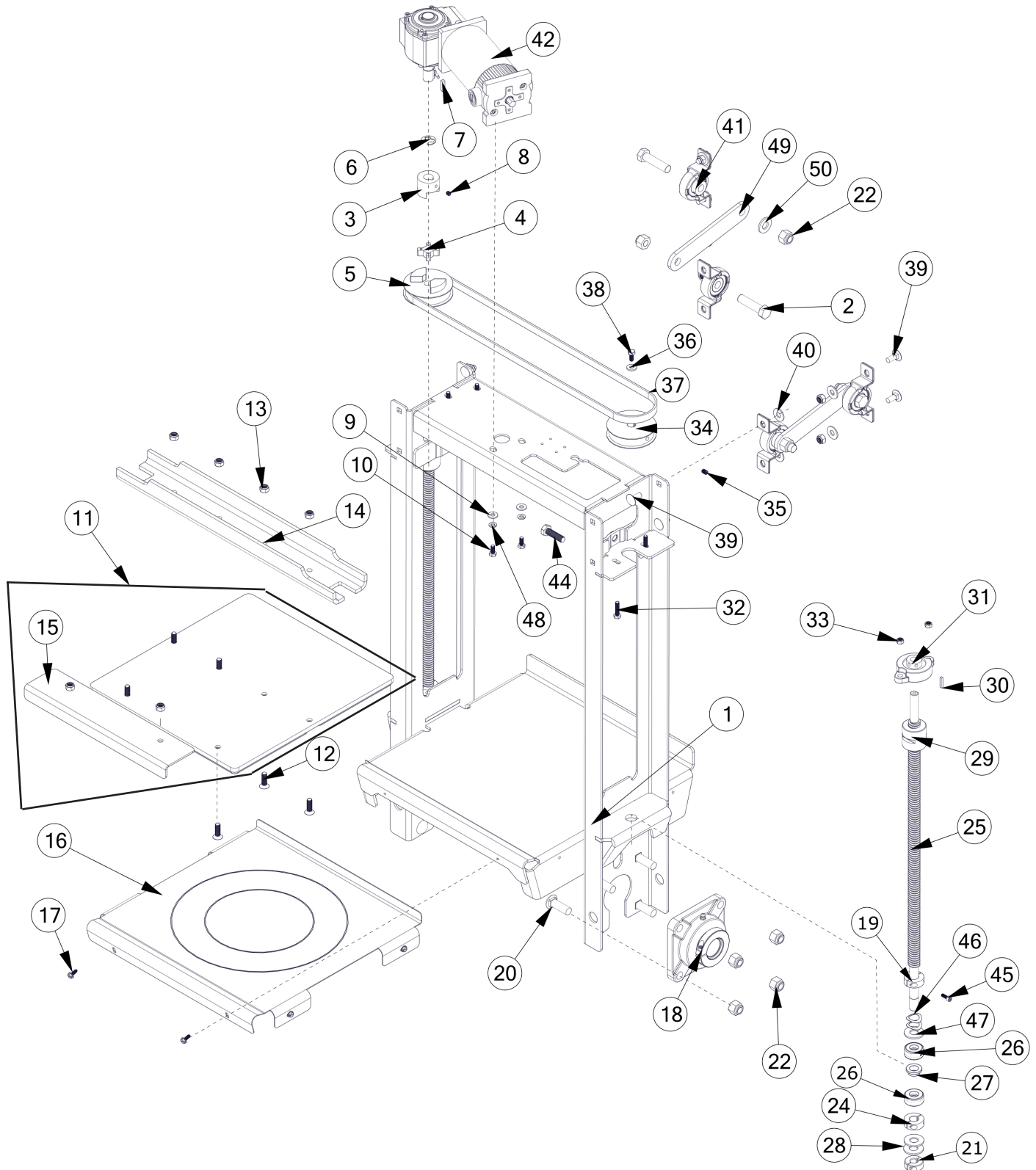
BOM ID	PART #	DESCRIPTION	BOM ID	PART #	DESCRIPTION
1	9787409	DOOR MOUNT, LOCK 5995 DL	11	9787428	COVER, DOOR LOCK, 5995 DL
2	5787538	SWITCH, LIMIT, 250V, LG LVR 5995 DL	12	9787425	SCR, HEX M5-0.8 X 10MM ZP
3	9787718	BRACKET, SWITCH, DOOR LOCK 5995 DL	13	9780749	WASHER, FLAT #10 USS ZINC
4	9787427	LINK, DOOR LOCK 5995 DL	14	9787422	WASHER, FLAT, 0.318 X 0.75 X 0.03 SS
5	5787366	SOLENOID, 12VDC, 1" STROKE, 5995 DL	15	9787429	RETAINING RING, EXT., 0.312 DIA.
6	9787720	COTTER PIN, 0.06, ZP	16	9787423	WASHER, OS, 0.238 X 0.62 X 0.045 ZP
7	9787424	SCR, SOC HD 10-32 X 0.25 LG BLK OX	17	9787426	HOOK, LATCH, DOOR LOCK 5995 DL
8	5787371	SENSOR, OPTICAL, 5995 DL	18	9787423	WASHER, OS, 0.238 X 0.62 X 0.045 ZP
9	9787425	SCR, HEX M5-0.8 X 10MM ZP	19	9788897	SPRING, COMP, 1.25 L X 0.593 OD, 1.6 RATE
10	9787742	SCR, HEX M3-0.5 X 16MM ZP	20	9789510	WASHER, ALUMINUM, 5995 DOOR LOCK

**PART NUMBERS LISTED MAY ONLY BE AVAILABLE IN KIT FORM OR AS AN ASSEMBLY**

Exploded Views, Continued...

...Exploded Views, Continued

## 9.4 Clamp Frame: Models - (PB, PB-RR, E6)



**PART NUMBERS LISTED MAY ONLY BE AVAILABLE IN KIT FORM OR AS AN ASSEMBLY**

Exploded Views, Continued...

...Exploded Views, Continued

## 9.4 Clamp Frame: Part List - (PB, PB-RR, E6)

\*Not available individually

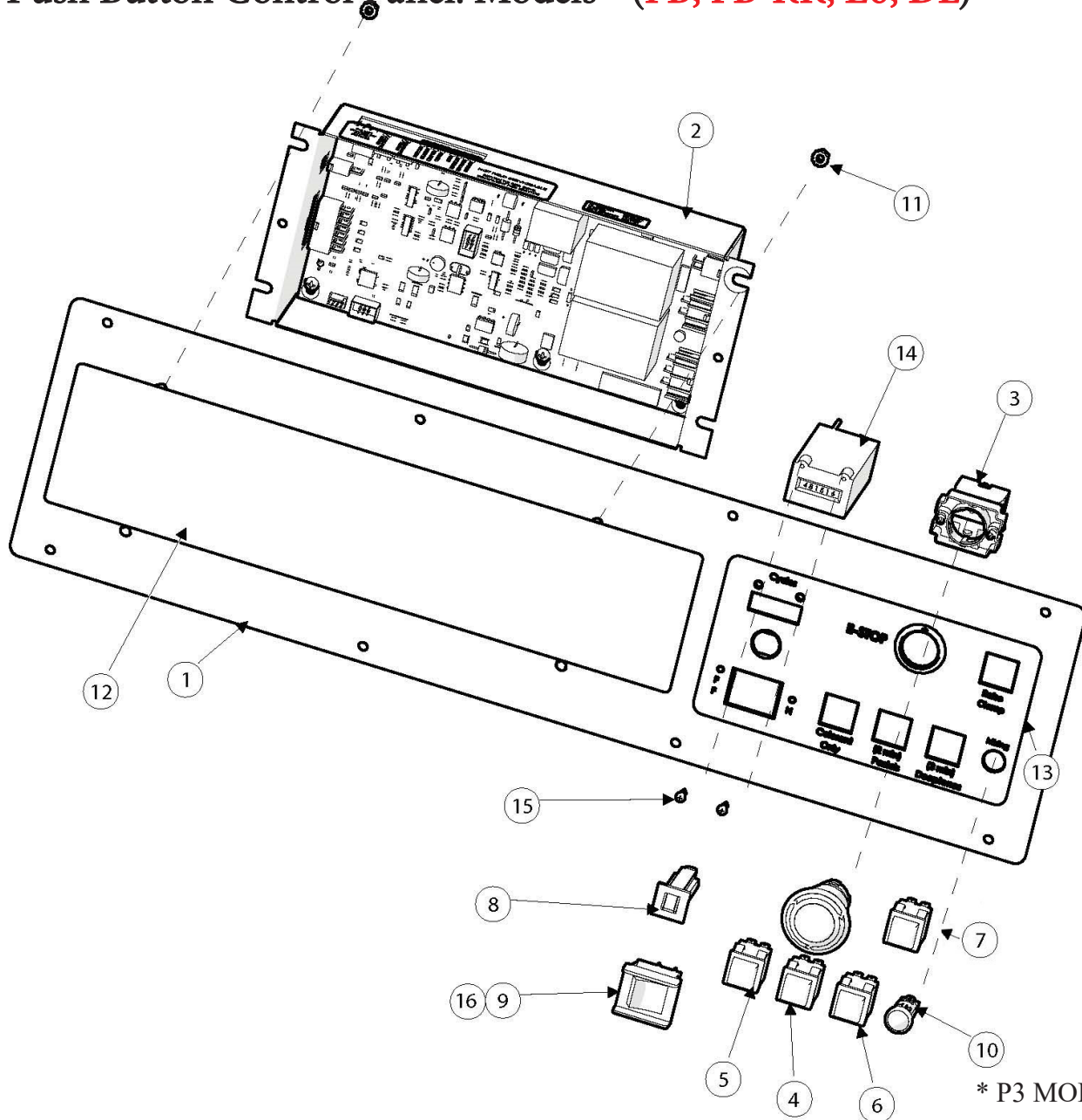
BOM ID	PART #	DESCRIPTION	BOM ID	PART #	DESCRIPTION
1	9784754	FRAME, WELDMENT, CLAMPING 5995	26	9783653	BEARING, THRUST 9/16 - MS PLATFORM
2	9784839	SCREW, HEX CAP 1/2-13 X 2.00	27	9783654	BUSHING, BRONZE
3	9783471	COUPLING, HALF 5/8, MS PLATFORM	28	9784920	WASHER 0.562 ID X 1.25 OD X 0.09 THK
4	9783549	SPIDER FLEX COUPLING, MS PLATFORM	29	9783072	LEAD SCREW NUT, LH, 3/4 MS PLATFORM
5	8784872	PULLEY, TIMING, 24T MS PLATFORM OS	30	9783498	KEY, SQUARE 1/8 X 0.75
6	9784959	RETAINING RING, E-STYLE, 0.625 DIA.	31	9784758	BEARING, 2 BOLT FLANGED
7	9784334	KEY, SQUARE 0.187 X 0.75	32	9784840	SCREW, HEX CAP M6-1.0 X 25MM
8	9784848*	1/4-20 X .25 LONG SET SCREW *COMES WITH ITEM 3*	33	9784841	NUT, NYLON LOCK M6-1.0
9	9760514	WASHER, 0.281 ID X 0.625 OD X 0.06 THK	34	9783491	PULLEY, TIMING - MS PLATFORM
10	9784941	SCREW, HEX CAP M6-1.0 X 14MM	35	9784846	SCREW, SET 1/4-28 X 3/8 SSS CUP PT HEX DRIVE
11	6785358	KIT, TOP PLATE REPL - MS PLATFORM	36	9760514	WASHER, 0.281 ID X 0.625 OD X 0.06 THK
12	9784842	SCREW, FHCS, TORX M8-1.25 X 25MM	37	9783190	BELT, TIMING MS PLATFORM
13	9784843	NUT, NYLON LOCK M8-1.25	38	9784941	SCREW, HEX CAP M6-1.0 X 14MM
14	9786448	U-CHANNEL, TOP PLATE, WIDE	39	9784854	SCREW, CARRIAGE M8-1.25 X 20MM CL 8.8
15	9784904	RETAINER, TOP PLATE - MS PLATFORM	40	9100023	WASHER, FLAT 5/16 USS ZINC
16	9784918	BOTTOM PLATE, STAINLESS 5995	41	9784880	BEARING, PILLOW BLOCK, FOLLOWER
17	9783385	SCREW, 10-32 X 0.5 SHWH TAP R Z M	42	5784798	MOTOR, DC GEAR 1/8HP H- BORE -90V/60HZ
18	9783019	BEARING, FLANGE 1.25 MS PLATFORM	44	9784847	SCREW, HEX CAP M10-1.5 X 35MM
19	9783651	COLLAR, SHAFT - MS PLATFORM	45	9784861	SCREW, TORX HD 10-32 X 1/2
20	9783356	SCR, CARR, S-NCK 1/2-13 X 1.5 GR5	46	9783659	SPRING, DISC
21	9784885	COLLAR, CLAMP, THREADED M14-2.0	47	9784920	WASHER 0.562 ID X 1.25 OD X 0.09 THK
22	9783383	NUT, NYLON LOCK 1/2-13	48	9780164	WASHER, LOCK 1/4 ZINC
24	9783651	COLLAR, SHAFT - MS PLATFORM	49	9784882	STRAP, BEARING FOLLOWER 5995
25	9784757	SCREW, CLAMP - MS PLATFORM, 5995	50	9784746	WASHER, FLAT 1/2 X 1.25 OD MAX, HARDENED

**PART NUMBERS LISTED MAY ONLY BE AVAILABLE IN KIT FORM OR AS AN ASSEMBLY**

Exploded Views, Continued...

...Exploded Views, Continued

## 9.5 Push Button Control Panel: Models - (PB, PB-RR, E6, DL)



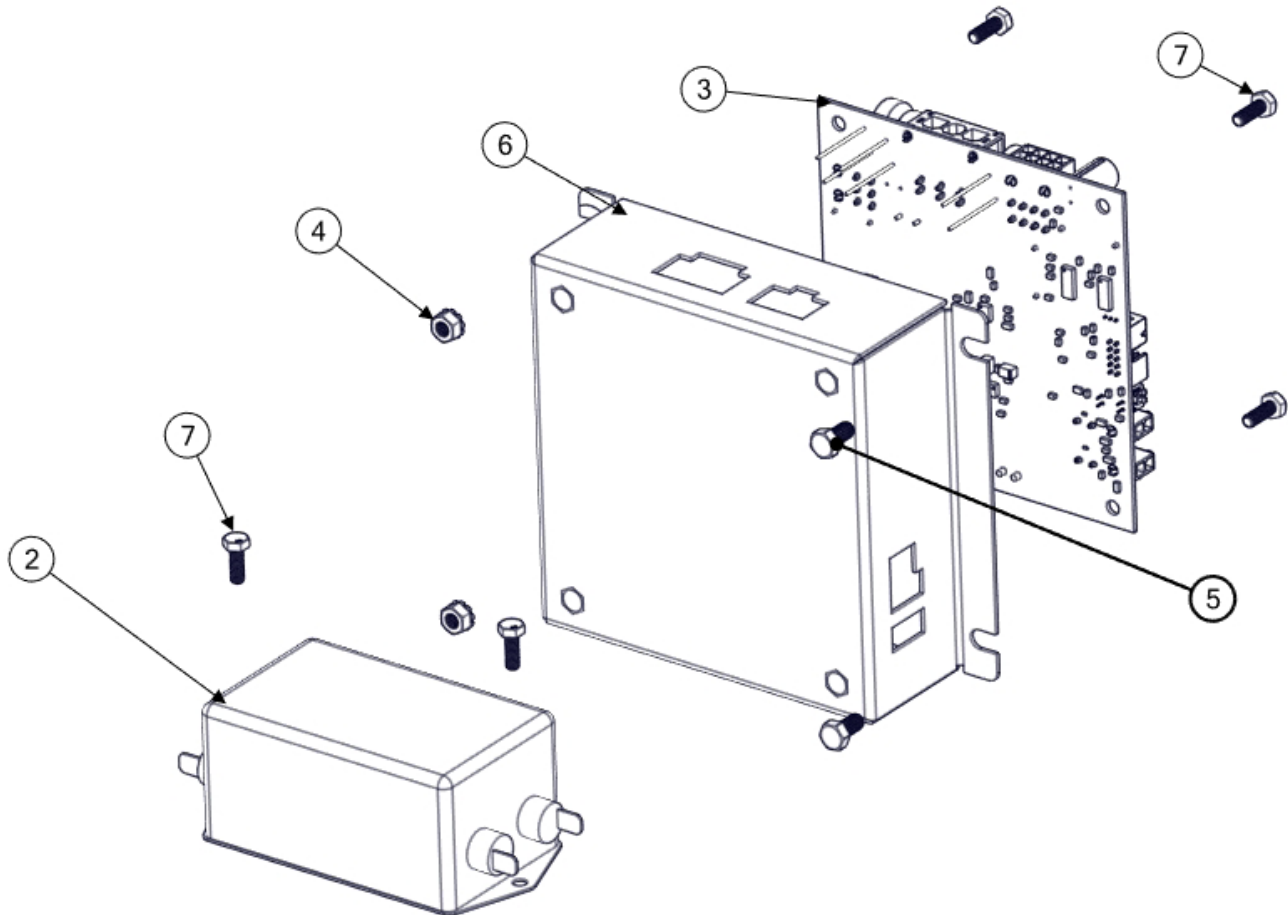
BOM ID	PART #	DESCRIPTION
1	9787207	PANEL, CONTROL, 5995
2	6785711	KIT, CONTROLLER REPL - MS PLATFORM
3	5784827	E-STOP SWITCH
4	5782583	PUSH BUTTON SWITCH, AMBER
5	5782584	PUSH BUTTON SWITCH, GREEN
6	5782585	PUSH BUTTON SWITCH, BLUE
7	5784874	PUSH BUTTON SWITCH, WHITE
8	5785315	CIRCUIT BREAKER, 20A

BOM ID	PART #	DESCRIPTION
9*	5787408	SWITCH, POWER DPST 20A
10	5787560	LED, PANEL MOUNT, HIGH BRIGHT RED
11	9784860	NUT, KEPS M5-0.8
12	1784879	DECAL 5995
13	1784876	LABEL, 3 BUTTON TIMER 5995
14	5784871	COUNTER, 12VDC
15	9784198	SCREW, PAN HD, PLASTITE #4 X 0.375 LG
16	5782445	POWER SWITCH

**PART NUMBERS LISTED MAY ONLY BE AVAILABLE IN KIT FORM OR AS AN ASSEMBLY**  
Exploded Views, Continued...

...Exploded Views, Continued

## 9.6 DL Electrical Components



BOM ID	PART #	DESCRIPTION	BOM ID	PART #	DESCRIPTION
2	5786240	LINE FILTER, 15A, 120-250V, 50-60HZ	5	9787425	SCR, HEX M5-0.8 X 10MM ZP
3	5787707	CONTROL BOARD, DOOR LOCK, 5995 DL	6	9787708	ENCLOSURE, DOOR LOCK MID CNTRLR, 5995 DL
4	9784860	NUT, KEPS M5-0.8	7	9787740	SCR, HEX M4-0.7 X 12MM ZP

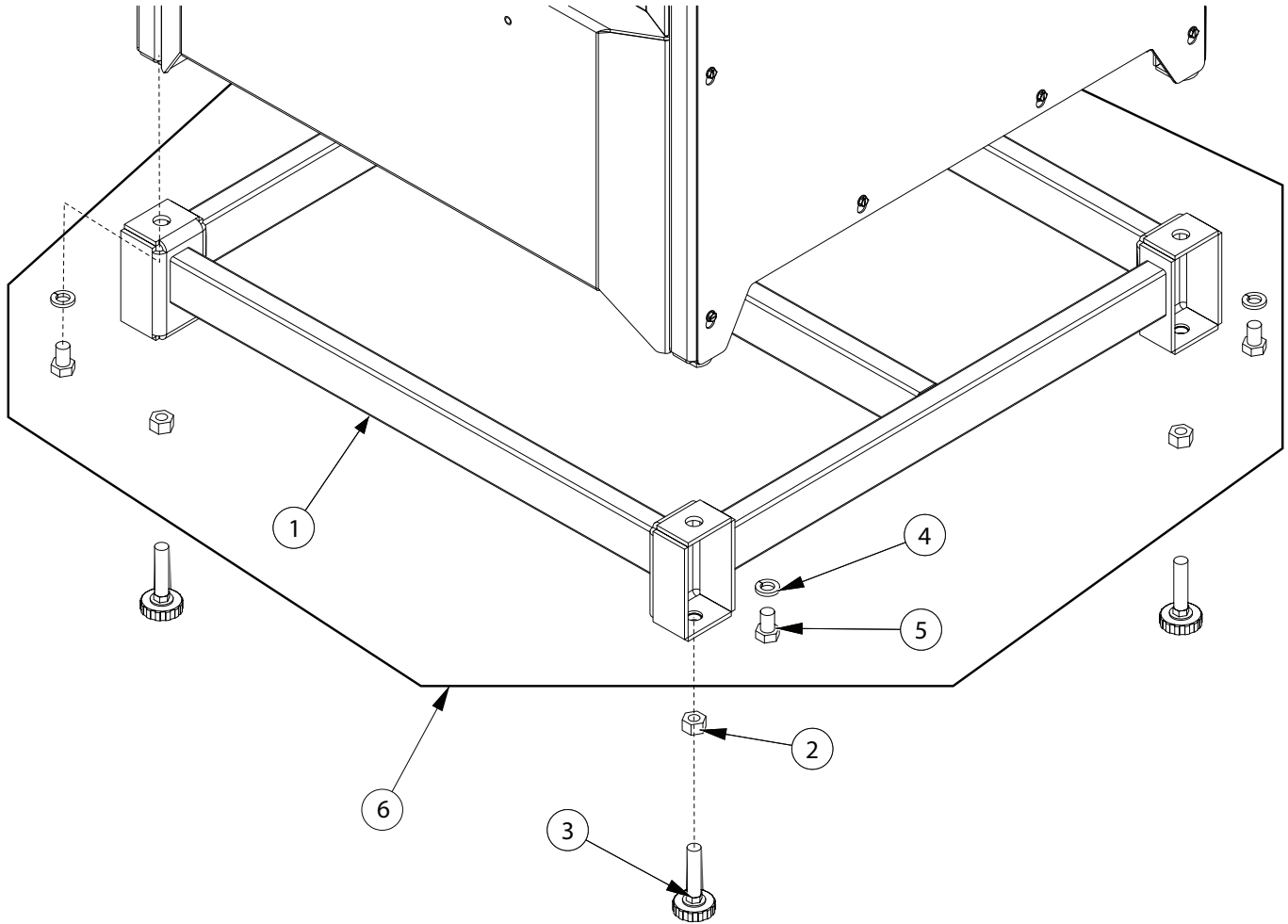
**PART NUMBERS LISTED MAY ONLY BE AVAILABLE IN KIT FORM OR AS AN ASSEMBLY**

Exploded Views, Continued...



...Exploded Views, Continued

## 9.7 Riser: Models - PB-RR



BOM ID	PART #	DESCRIPTION
1	9787208	RISER, WELDMENT, 5995RR
2	9781711	NUT, HEX 1/2-13
3	9785721	FOOT, GLIDER

BOM ID	PART #	DESCRIPTION
4	9780214	WASHER, LOCK SPLIT 1/2
5	9785862	SCREW, HEX 1/2-13 X 0.75
6	6784030	KIT, RISER, ACCU TINTER 4000 SER 5995

**PART NUMBERS LISTED MAY ONLY BE AVAILABLE IN KIT FORM OR AS AN ASSEMBLY**

Exploded Views, Continued...

## 10. Ordering

### Replacement Parts

#### HOW TO ORDER REPLACEMENT PARTS

Replacement parts can be ordered from Radia Co. by telephone, fax, or email:

#### **RADIA**

800-221-1083  
763-533-2969  
763-533-0015 (FAX)  
orders@radiaproducts.com

If you need help in determining the proper part(s) to order, please call Customer Care. at 1-800-221-1083. Always indicate the Model and Serial numbers of the machine when ordering replacement parts.

#### GENERAL PARTS REPLACEMENT POLICIES

While your machine is under warranty, do not attempt on-site repair or parts replacement without first contacting RADIA. (to protect your warranty). After the warranty expires, replacement parts and recommendations for on-site servicing are available from RADIA. Please Customer Care for assistance.

#### RESTOCKING FEE

A restocking fee will be charged on all unused parts which are returned.



For instructional "How To" videos please visit:  
[www.radiaproducts.com](http://www.radiaproducts.com)



# 11. Warranty

## Equipment Covered Under This Warranty

Models 05995

### Warranty

Radia warrants equipment manufactured by it and bearing its name to be free from defects in material and workmanship.

**EXCEPT FOR THE WARRANTY SET FORTH HEREIN, RADIA MAKES NO WARRANTY WHATSOEVER WITH RESPECT TO THE EQUIPMENT, INCLUDING ANY (a) WARRANTY OF MERCHANTABILITY; (b) WARRANTY OF FITNESS FOR A PARTICULAR PURPOSE; OR (c) WARRANTY AGAINST INFRINGEMENT OF INTELLECTUAL PROPERTY RIGHTS OF A THIRD PARTY; WHETHER EXPRESS OR IMPLIED BY LAW, COURSE OF DEALING, COURSE OF PERFORMANCE, USAGE OF TRADE OR OTHERWISE.**

This warranty applies only when the equipment is installed, operated and maintained in accordance with written Radia instructions as appearing in the owners' manuals.

This warranty does not cover, and Radia shall not be liable for, any malfunction, damage, or wear caused by faulty installation, misapplication, abrasion, corrosion, inadequate or improper maintenance, negligence, accident, tampering or substitution of non-Radia component parts, modification or use for non-intended purposes. Nor shall Radia be liable for malfunction, damage or wear caused by the incompatibility of Radia equipment with structures, accessories, equipment, or materials not supplied by Radia.

Subject to the limitations set forth above, Radia shall (i) repair or replace the equipment (or the defective part) or (ii) credit or refund the price of such equipment. Costs of labor and transportation for service of machines under this warranty will also be covered during the warranty period if Radia elects to repair or replace the equipment. Normal ground freight will be covered for replacement parts sent within the warranty period. For customers outside of the US and Canada, the warranty is for parts only. Ground or common carrier ground freight will be covered for the return of defective items only. In no case shall Radia's liability exceed the amount of the purchase price.

\*All warranty repairs must be executed by a Radia Authorized Service Center or warranty will be voided.

**THE REMEDIES SET FORTH HEREIN ARE PURCHASER'S SOLE AND EXCLUSIVE REMEDY and RADIA'S ENTIRE LIABILITY FOR ANY BREACH OF THE LIMITED WARRANTY SET FORTH HEREIN.**

Please contact your Radia Relationship Manager at 800-221-1083 for specific questions regarding specific questions regarding warranty terms.





For sales or service, please contact

RADIA  
Attn: Customer Service Department  
14900 21st Ave N  
Plymouth, Mn 55447  
USA

**U.S. Telephone:** 800.211.1083  
**International Telephone:** 763.533.2969  
**Fax:** 763.533.0015  
**E-mail:** [info@radiaproducts.com](mailto:info@radiaproducts.com)

[www.radiaproducts.com](http://www.radiaproducts.com)



For instructional "How To" videos please visit:  
[www.radiaproducts.com](http://www.radiaproducts.com)

