

Owner's Manual: 5025X1

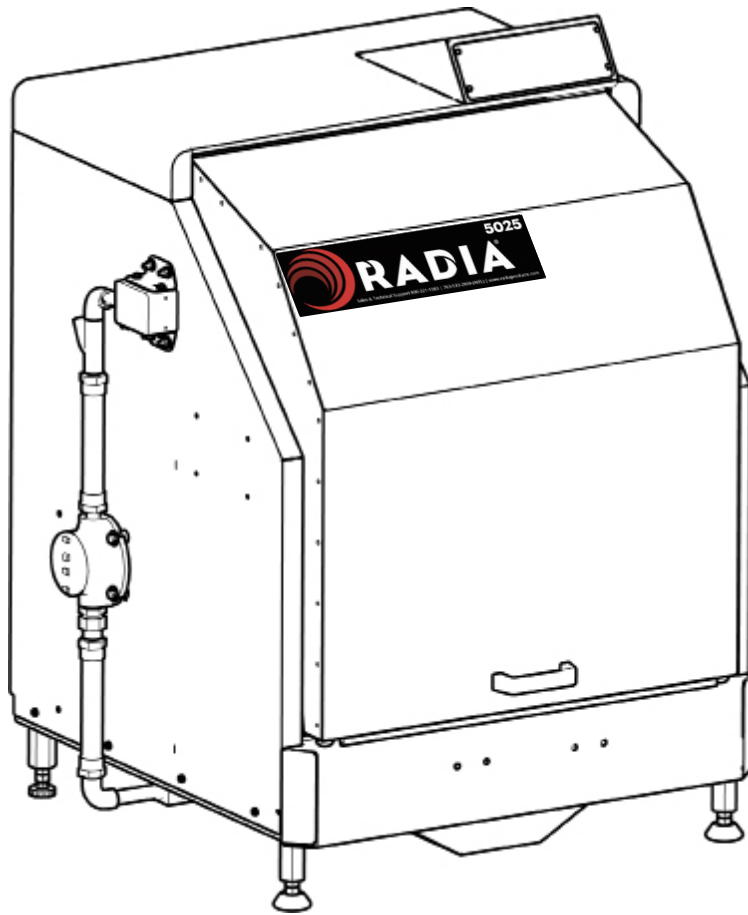





Table of Contents

1. Safety Information	3	6. Trouble Shooting	10
1.1 Safety Precaution Labels	4		
1.2 Safety Precaution Summary	5	7. Wiring Diagram	11
2. Introduction	6	8. Exploded Views	12
2.1 Application	6	8.1 Electrical Assembly	12
2.2 Specifications	6	8.2 Frame and Drive	13
3. Installation	7	8.3 Main Drive	14
3.1 Prepare for Use	7	8.4 Rotating frame, Lower Section	15
3.2 Verify the Machine is Level	7	8.5 Rotating frame, Upper Section	16
4. Operation	8	8.6 Crank Handle	17
4.1 Control Panel	8	8.7 Bearing Housing Assembly	18
4.2 Install a Pail	8	8.8 Shroud	19
5. Care and Maintenance	9	8.9 Feet	20
5.1 Cleaning	9	9. Ordering	21
5.2 Maintenance	9	Replacement Parts	21
		10. Warranty	22
		Notes	23

1. Safety Information

Review this owner's manual and read all warning labels on the machine prior to use.

The three main safety notifications used in this manual and on the warning labels are **WARNING**, **CAUTION** and **NOTICE**. They have specific meanings and indicate the potential dangers from misuse of the machine.

	<p>"WARNING!" indicates a hazardous situation, which, if not avoided, could result in death or serious injury. These serious injuries could include permanent loss of function or significant disfigurement, disability, considerable pain and suffering, amputations, severe burns, and loss or impairment of vision or hearing. Take all necessary precautions to avoid unnecessary injury.</p>
	<p>"CAUTION!" indicates a hazardous situation, which, if not avoided, could result in minor or moderate injury.</p>
	<p>"NOTICE" indicates practices that do not involve physical injury but may damage the machine.</p>

1.1 Safety Precaution Labels



WARNING
ADVERTENCIA
AVERTISSEMENT

- Machine must be properly grounded before use; improper grounding could cause electric shock and injury.
- Disconnect power cord before servicing, cleaning or removing any cover, and follow lockout/ tagout procedures in owner manual; failure to disconnect power could cause electric shock and injury.
- Review Owners Manual before installing or operating.

- La maquinaria debe ser apoyada correctamente en el suelo antes de usar, el no apoyarla puede casuar choque eléctrico y daños.
- Desconecte la energía antes de dar mantenimiento, limpiar o quitar cualquier cubierta, y siga los procedimientos de bloqueo/etiquetado del manual, Fallar en desconectar puede causar choque eléctrico y daños.
- Revise el manual del usuario antes de instalar u operar.

- La machine doit e'tre correctement mis a' la terre avant de les utiliser mise a' la terre incorrecte peut provoquer un choc e'lectrique et de blessure.
- De'branchez le cordon d'alimentation avant de proce'der a'll'entretien, le nettoyage ou le retrait des capots: suivez la proce'dure d'isolation/ consignation proce'dures dans le manul de l'opre'rateur; E'chec de de'brancher la source d'alimentation peut provoquer shock and e'lectrique blessyres.
- Re'examiner le fonctionnement manuel avant l'installation.

Part No. 1781570



WARNING
ADVERTENCIA
AVERTISSEMENT

MOVING PARTS INSIDE
PARTES EN MOVIMIENTO
PIE'CES EN MOVEMENT

- Do not open door until machine comes to complete stop; moving parts inside could cause serious injury.
- No abra la puerta hasta que la maquina se detenga completamente, las partes internas en movimiento pueden causar heridas graves.
- Ne pas ouvrir la porte avant que la machine ne s'arrête complètement. Pièces en mouvement à l'intérieur pourraient provoquer des blessures graves.

Part No. 1784963

NOTICE

DO NOT OVER -TIGHTEN!

Tighten clamp up to 1/2 turn
after contact with pail lid.

Part No. 1784462

<div style="background-color: #2980b9; color: white; padding: 10px; border-radius: 10px;"> <p style="text-align: center; font-size: 24px; margin: 0;">NOTICE</p> <p style="text-align: center; font-weight: bold; margin: 5px 0;">BEFORE RUNNING MACHINE, DID YOU...</p> <p style="margin: 5px 0;">1. POSTION CONTAINER PROPERLY?</p> <p style="margin: 5px 0;">2. ATTACH THE BAIL SPRING?</p> <p style="margin: 5px 0;">3. TIGHTEN CLAMP SECURELY?</p> </div>				IMPORTANT MAINTENANCE ITEMS		
				FREQUENCY	ITEM	MAINTENANCE
				WEEKLY	CLAMP RELEASE LEVER	LUBRICATE SHAFT WITH 3 IN OIL
				WEEKLY	THRUST BEARING	TURN ROTATING ASSEMBLY UPSIDE DOWN AND LUBRICATE ALL AROUND OUTSIDE EDGE OF THRUST BEARING WITH 3 IN 1 OIL.
				WEEKLY	BOTTOM PLATE	CLEAN OFF PAINT WITH HOT SOAPY WATER.
				EVERY 6 MONTHS	CLAMPING SCREW	GREASE WITH STANDARD MULTI-PURPOSE LITHIUM BASED GREASE AS NEEDED.
				EVERY 6 MONTHS	GREASE ZERKS	GREASE WITH STANDARD MULTI-PURPOSE LITHIUM BASED GREASE, TWO SQUIRTS PER ZERK ONLY, OVER GREASING WILL CAUSE PREMATURE FAILURE OF BEARING.
				AS NEEDED	VERTICAL SLIDE TUBES	CLEAN OFF DIRT AND PAINT WITH HOT SOAPY WATER









Part No. 1784000

Safety Information, Continued..







Safety Information, Continued..

1.2 Safety Precaution Summary

WARNING!

-  Be sure that the remote power switch is installed by a qualified electrician. Refer to local codes for proper placement of the remote power switch.
 -  Review this owner's manual before installing or operating.
 -  The machine must be properly grounded prior to use. In the case of an electrical short circuit, grounding reduces the risk of electric shock by providing an escape wire for the electric current.
 -  Check with a qualified electrician if you don't completely understand these grounding instructions, or if you are not sure whether the machine is properly grounded.
 -  Follow the lock-out/tag-out procedures of your company.
 -  Do not open the door until the machine comes to a complete stop.
 -  Review the product label, Material Safety Data Sheet, and HMIS rating of materials prior to mixing to determine potential hazards.
-  **WARNING: This product may expose you to chemicals including DEHP, which is known to the State of California to cause cancer. For more information, go to www.P65Warnings.ca.gov**

CAUTION!

-  Keep the work area free of clutter and electrical cords.
-  Avoid extension cords. To minimize the risk of improper electrical grounding, extension cords are not recommended. If an extension cord is unavoidable, consult a qualified electrician to determine what type of extension cord will satisfy the grounding, current capacity, and other requirements of the particular situation.
-  Use the proper power source. Refer to the machine data plate on the right side panel or the section 2.1, Specifications, in this manual.
-  DO NOT disable the limit switch. This switch interrupts power when the mixer door is opened.
-  Keep customers away from the work area. This machine should be used only by properly trained individuals.
-  Clamp the can carefully to ensure that it is held securely during the mixing cycle.

2. Introduction

2.1 Application

Congratulations on your purchase of the 05025 Gyro Mixer. This machine is designed to accommodate standard five-gallon plastic or metal pails weighing up to 125 lb. (45.3 kg).

Understand your machine's features and proper operation to take full advantage of its capabilities.

Read this entire manual completely before operating the machine. Practice installing and removing a pail before mixing for the first time.

An optional Riser Leg Kit is available for additional height adjustments. Please see section 9, Ordering, for additional information.

Keep this manual for future reference.

Always follow all safety instructions!

2.2 Specifications

Unit Size: **W** 35 in (89 cm) **D** 34 in. (86.4 cm)
H 46.5 in (118 cm)

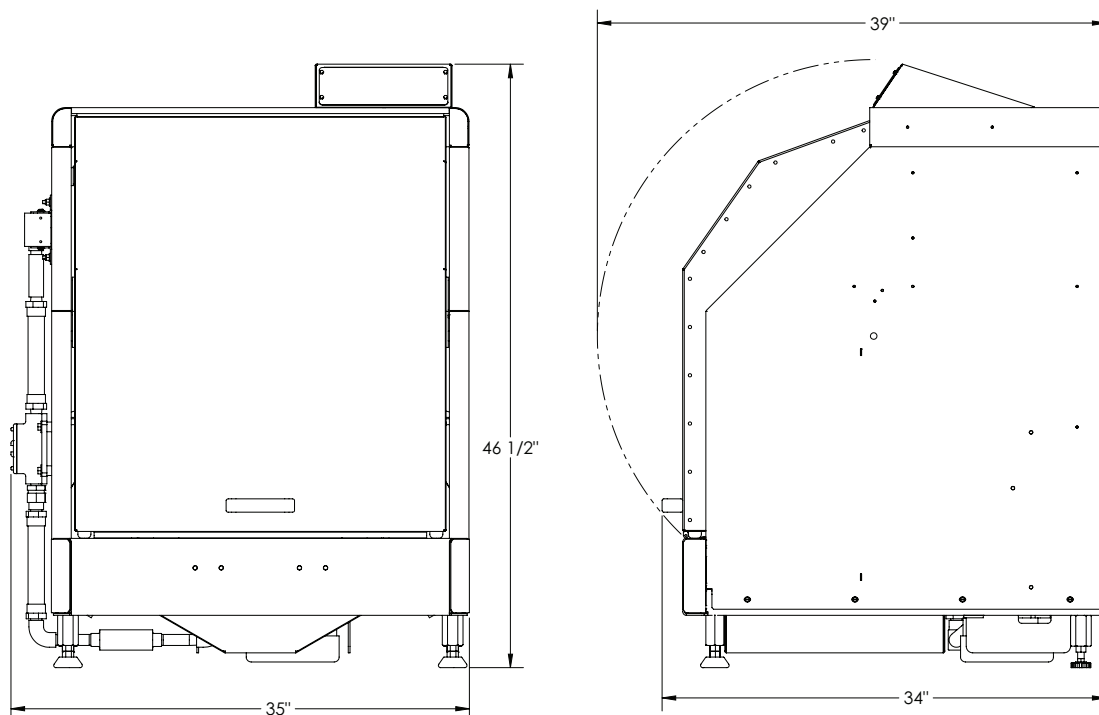
Weight: 440 lb. (199.6 kg)

Electric Service: 110 V 60 Hz

Capacity: 125 lb. (45.3 kg)

Sizes Mixed: 5 gal. (19 L)

Load Height: 13 in. (33 cm) to 16 in. (41cm)



3. Installation

3.1 Prepare for Use

WARNING! Be sure that the remote power switch is installed by a qualified electrician.

Power switch and/or Timer **must** be procured by the Electrician or another source.

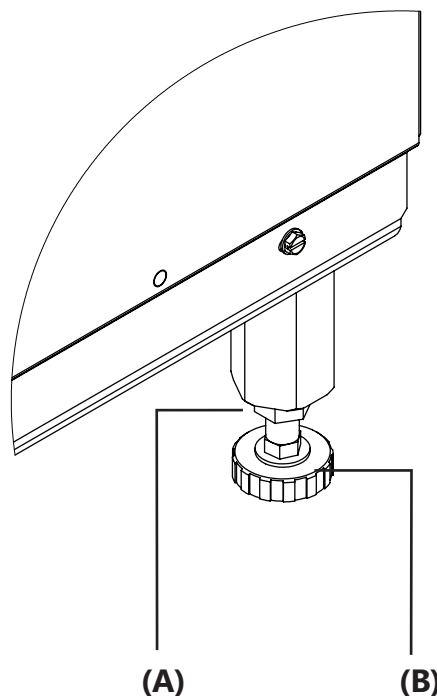
Refer to local codes for proper placement of the remote power switch.

IMPORTANT: Before attempting to operate the machine:

1. Remove all packaging material.
2. Position the machine on a firm, level surface.
3. Follow the electrical connection instructions described in Section 1.2, Safety Precaution Summary.

3.2 Verify the Machine is Level

1. Clamp a 5-gallon pail in the machine as as per the instructions in Section 4.2, install a Pail and Mix.
2. Turn the timer to start the machine.
3. Adjust any feet under which a piece of paper can fit.
 - A. Loosen the upper jam nut **(A)**.
 - B. Turn the foot **(B)** to adjust.
 - C. Tighten the jam nut **(A)** when the foot makes full contact with the floor.
4. Repeat with any additional feet that may still need adjustment.



4. Operation

4.2 Install a Pail

⚠ WARNING! Avoid serious personal injury. Do not open the door until the machine comes to a complete stop; moving parts inside could cause serious injury.

1. Open the cabinet door
2. Pull the red ratchet level **(A)** toward you and turn the handle on the top of the clamp **(B)** counterclockwise to raise the plate.
3. Slide the pail under the clamping (top) plate **(C)**
4. Position the pail in the grooves on the bottom plate **(D)** The grooves on the plate keep the pail in place during mixing.
5. Lower the clamping plate **(C)** by turning the handle clockwise. Once the plate makes contact with the pail, tighten another 1/4 turn.
6. Secure the bail with the bail spring.
7. Close the door and turn on the remote switch. Turn the switch off after the desired mix time.

NOTICE

Avoid damage to the machine

- A safety interlock interrupts machine operation if the door is open

4.2 Remove a Pail

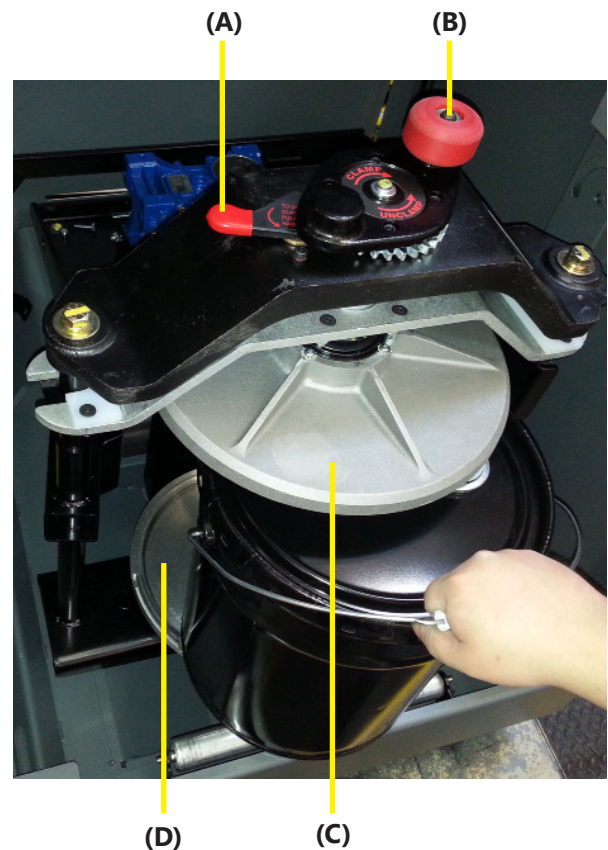
1. Raise the clamp all the way to the top by holding the ratchet lever open while turning the crank handle counterclockwise.

2. Unfasten the bail spring.


3. Remove the pail:

Metal Pails: Grab pail handle and pull forward, allowing the base of the pail to leverage its self off of the strike plate near the roller. Pull the handle to remove the pail from the machine.


Plastic Pails: Lift the pail by the lip with both hands and pull it toward you, being careful to keep the bottom from catching on the strike plate.



5. Care and Maintenance

 **WARNING!** Avoid electric shock. Always remove power from the machine per your company's lock out/tag out procedures before performing cleaning and maintenance tasks.

5.1 Cleaning

 Avoid serious personal injury. Do not use solvent-based cleaners or thinners, or other combustible cleaners.

- Keeping the machine clean is important for reliable operation.
- Remove water-based/glycol colorants or base paints spilled on machine surfaces using lukewarm water and mild detergent.
- To preserve the appearance of the machine, do not use abrasives to clean machine surfaces.

5.2 Maintenance

Lubrication:

1. Speed Reducer: Maintenance is not required. If an oil change is necessary due to debris build-up:

A. Remove the oil drain plug on the bottom side of the machine and drain the oil from the gearbox.

B. Remove the oil level plug and fill only up to that level: with Mobil SHC 634 Synthetic oil. Do not overfill or underfill.

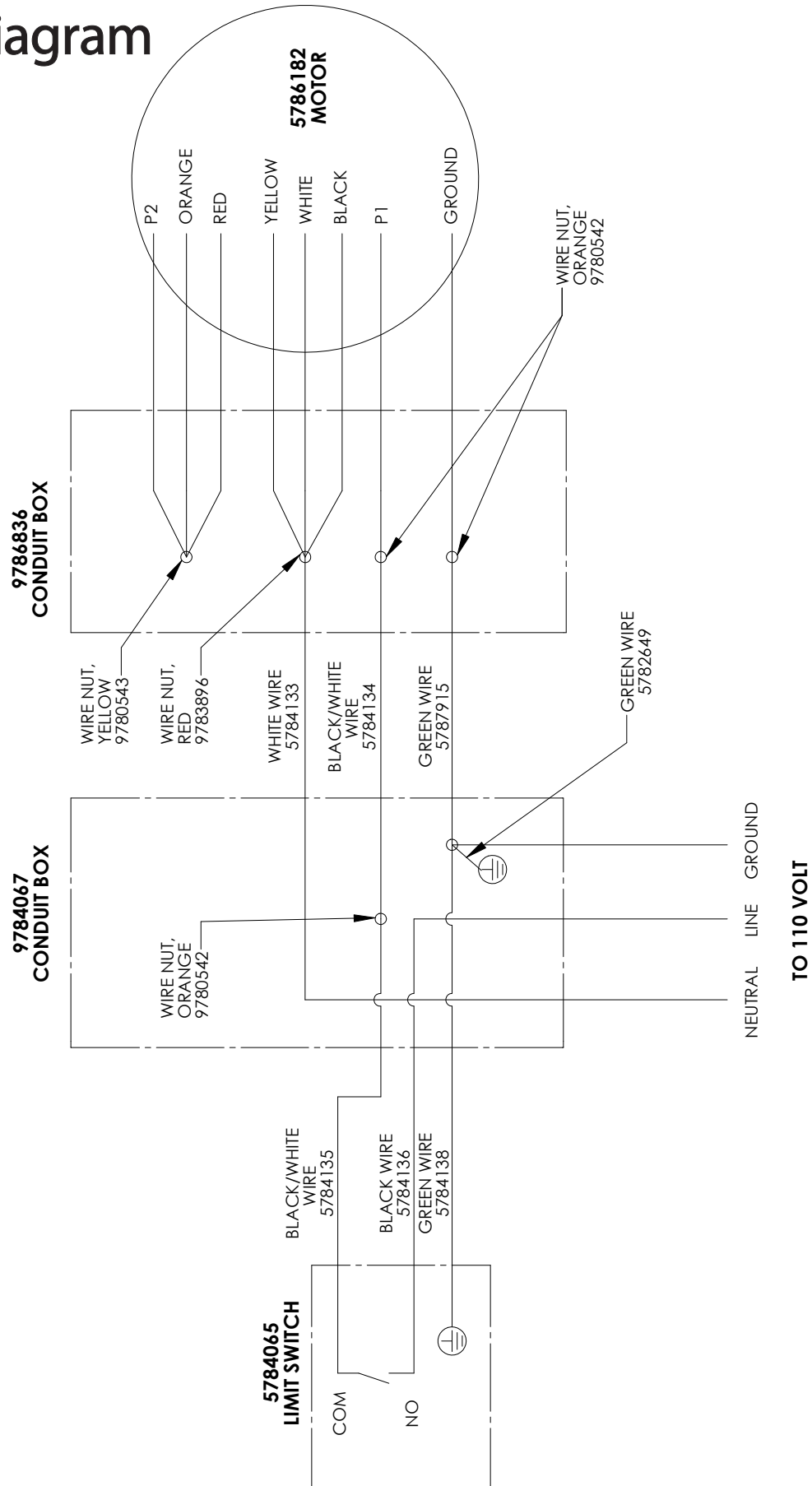
2. Clamp: Lubricate the clamping screw threads and thrust bearing as needed.

3. Ratchet Lever: Lubricate the shaft as needed.

6. Troubleshooting

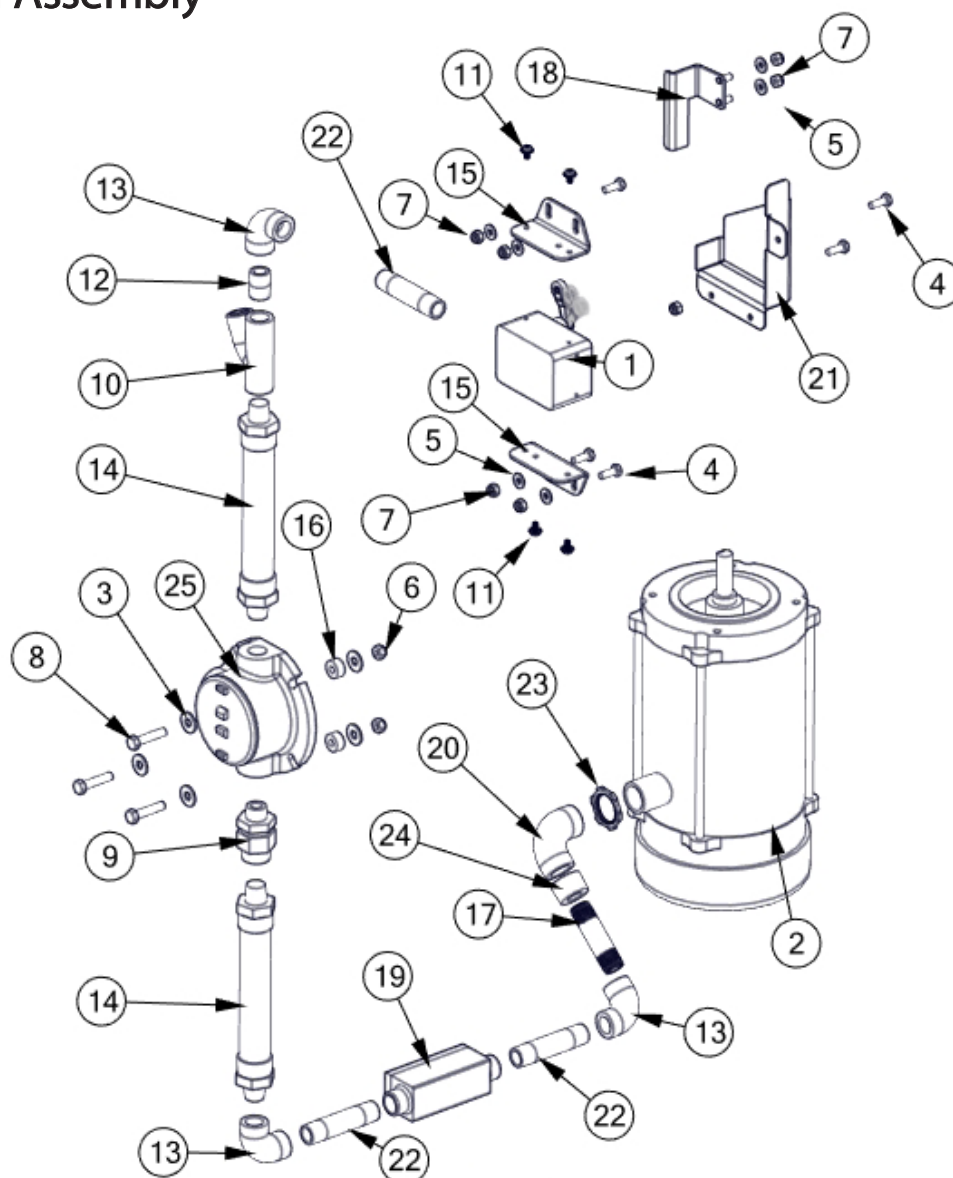
PROBLEM	CAUSE	REMEDY
Machine won't operate	Not connected to power source	Connect to power source
	Motor thermal protector activated	Allow to cool, then restart
	Building circuit breaker or fuse blown	Reset breaker or replace fuse
	Machine door does not make contact with limit switch	Readjust switch to make contact with limit switch screw when door is closed
	Machine circuit breaker tripped	Reset by pressing circuit breaker back in
Pail won't fit properly into clamping plates	Pail damaged	Fix or replace pail
Machine doesn't shut off at end of mixing cycle	Faulty controller	Contact Radia Customer Care
Machine doesn't shut off when door is opened	Faulty door limit switch	Contact Radia Customer Care
Increasing mechanical noise	Bearings worn or damaged	Contact Radia Customer Care
Pail rotates inside the clamping plates	Top clamp pad worn	Replace pad
	Top clamp not secure	Turn the crank handle down until top plate is snug on pail

7. Wiring Diagram



8. Exploded Views

8.1 Electrical Assembly



ID	Description
1	5784065 Switch, Limit Ex Proof - 20A Rating
2	5786182 Motor, X-PROOF, 1 HP, 56C
3	9100023 WASHER, FLAT 5_16 USS
4	9788088 SCREW HEX 1_4-20 X .75 GR8 ZP Patch
5	9760514 Washer 1_4 SAE .281 ID
6	9780182 Nut, Nylock 5_16-18
7	9780343 Nut 1_4-20 Nylon Lock
8	9780775 Screw Hex 5_16 X 1.50
9	9782429 UNION, .5 NPT
10	9784068 Fitting, Seal 0.50 M-F
11	9784079 Screw, Machine Washer HD #10-32 x .375
12	9784115 Nipple, Close - .5 NPT
13	9784116 Elbow, 90, .5 NPT, female-female

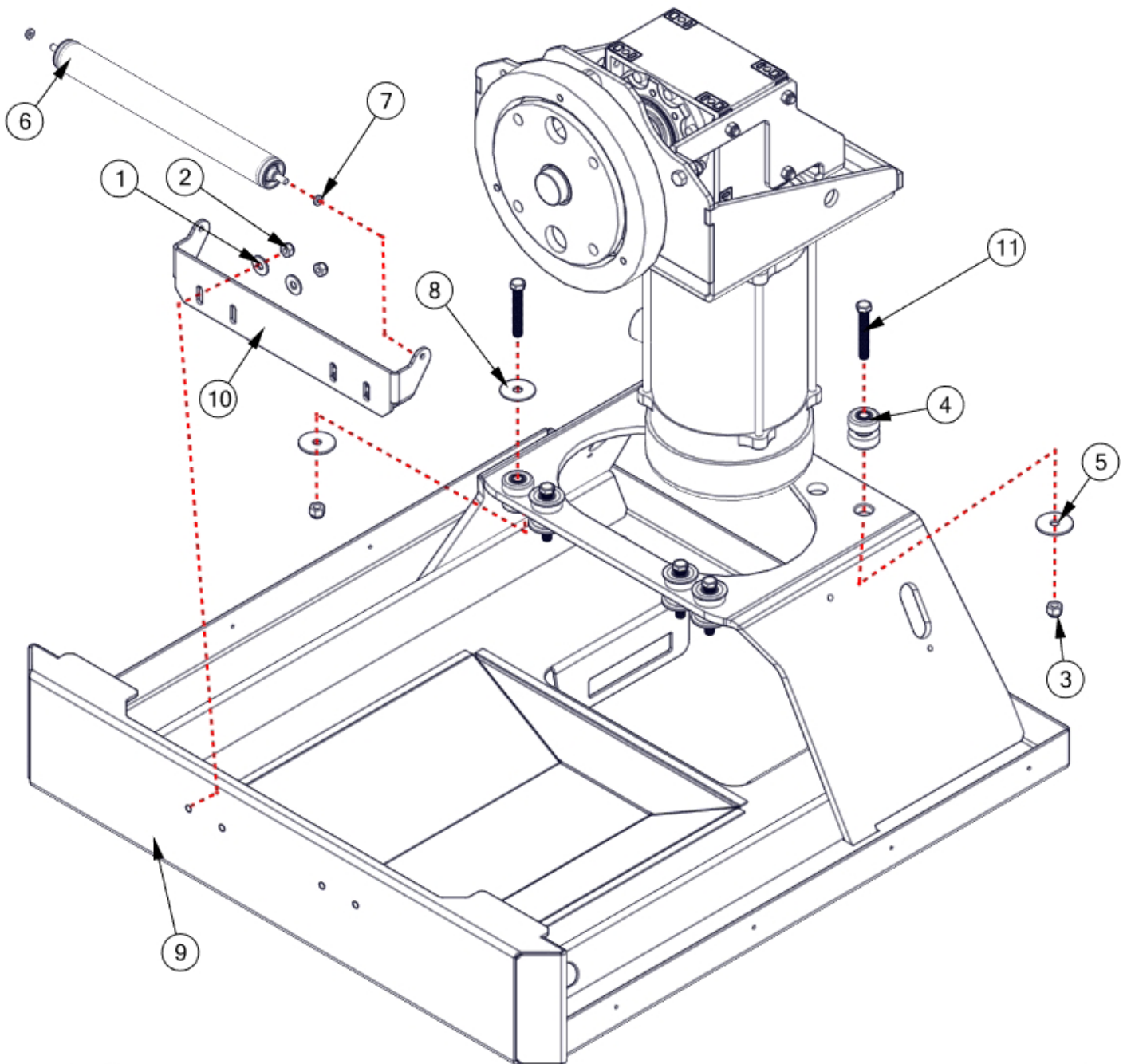
ID	Description
14	9784117 Conduit, Flexible - .5 NPT, 6 Long
15	9784124 Bracket, Limit Switch
16	9784142 Spacer, .315ID x .750OD x .375 Long
17	9785154 NIPPLE, .50NPT X 3.00
18	9786838 BRACKET, TRIP, LIMIT SWITCH
19	9786836 CONDUIT BODY, C - .50 NPT
20	9786840 ELBOW, 90, F-F, 1 NPT
21	9786842 COVER, SWITCH, 5025 EX PROOF
22	9786843 NIPPLE, 1_2 NPT X 3.50
23	9787290 CONDUIT LOCKNUT, 1.00
24	9786837 REDUCER, CONDUIT, 1.0-.50
25	9784067 Conduit Box, T 0.50

PART NUMBERS LISTED MAY ONLY BE AVAILABLE IN KIT FORM OR AS AN ASSEMBLY

Exploded Views, Continued...

...Exploded Views, Continued

8.2 Frame and Drive



ID	Description
1	9100023 WASHER, FLAT 5_16 USS
2	9780182 Nut, Nylock 5_16-18
3	9780193 NUT, NYLOCK 3_8-16
4	9780367 Isolator set
5	9780368 Washer
6	9782520 ROLLER

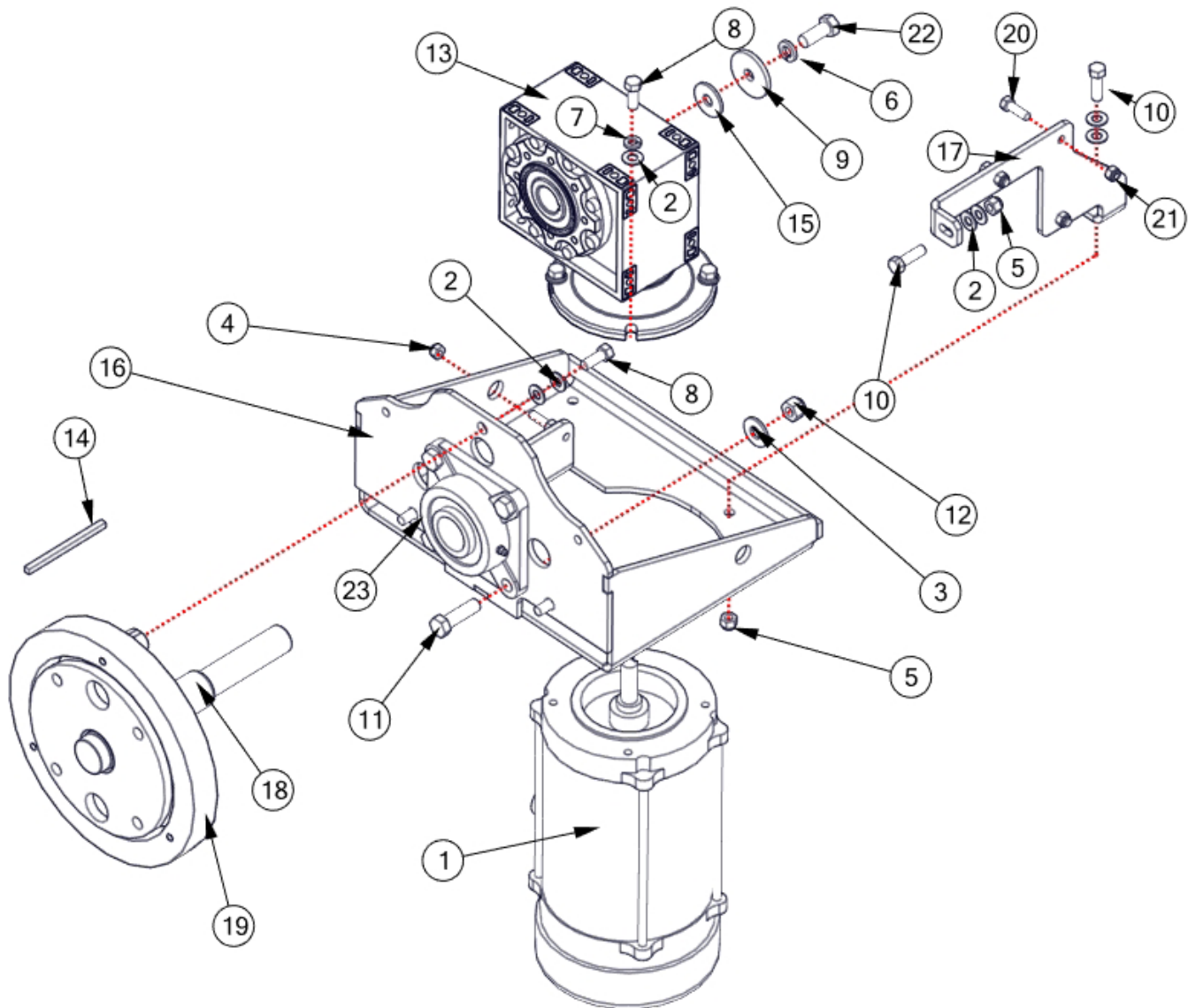
ID	Description
7	9785537 WASHER, NEO, .195 ID, .438 OD, .093T
8	9786768 WASHER, FLAT, .406 ID X 1.50 OD X .062 TH, SS
9	9786804 BASE WELDMENT - 5925-5025
10	9786803 BRACKET, ROLLER - 5025
11	9783894 Screw Hex 3_8-16 x 2.50 Full Thd

PART NUMBERS LISTED MAY ONLY BE AVAILABLE IN KIT FORM OR AS AN ASSEMBLY

Exploded Views, Continued...

...Exploded Views, Continued

8.3 Main Drive



ID	Description
1	5786182 Motor, X-PROOF, 1 HP, 56C
2	9100731 WASHER, FLAT 3_8 X .82 OD
3	9688200 Washer 1_2
4	9780182 Nut, Nylock 5_16-18
5	9780193 NUT, NYLOCK 3_8-16
6	9780214 Washer 1_2 LOCK
7	9780402 Washer 3_8 split lock
8	9788040 SCREW HEX 3_8-16 X 1.00 GR8 ZP Patch
9	9781083 Washer, Flat .507 ID x 2.00 OD x .19 Thk
10	9781228 Screw Hex 3_8 X 1_4
11	9782172 Screw Hex 1_2 X 1_75
12	9783383 Nut 1_2 Nylon Lock

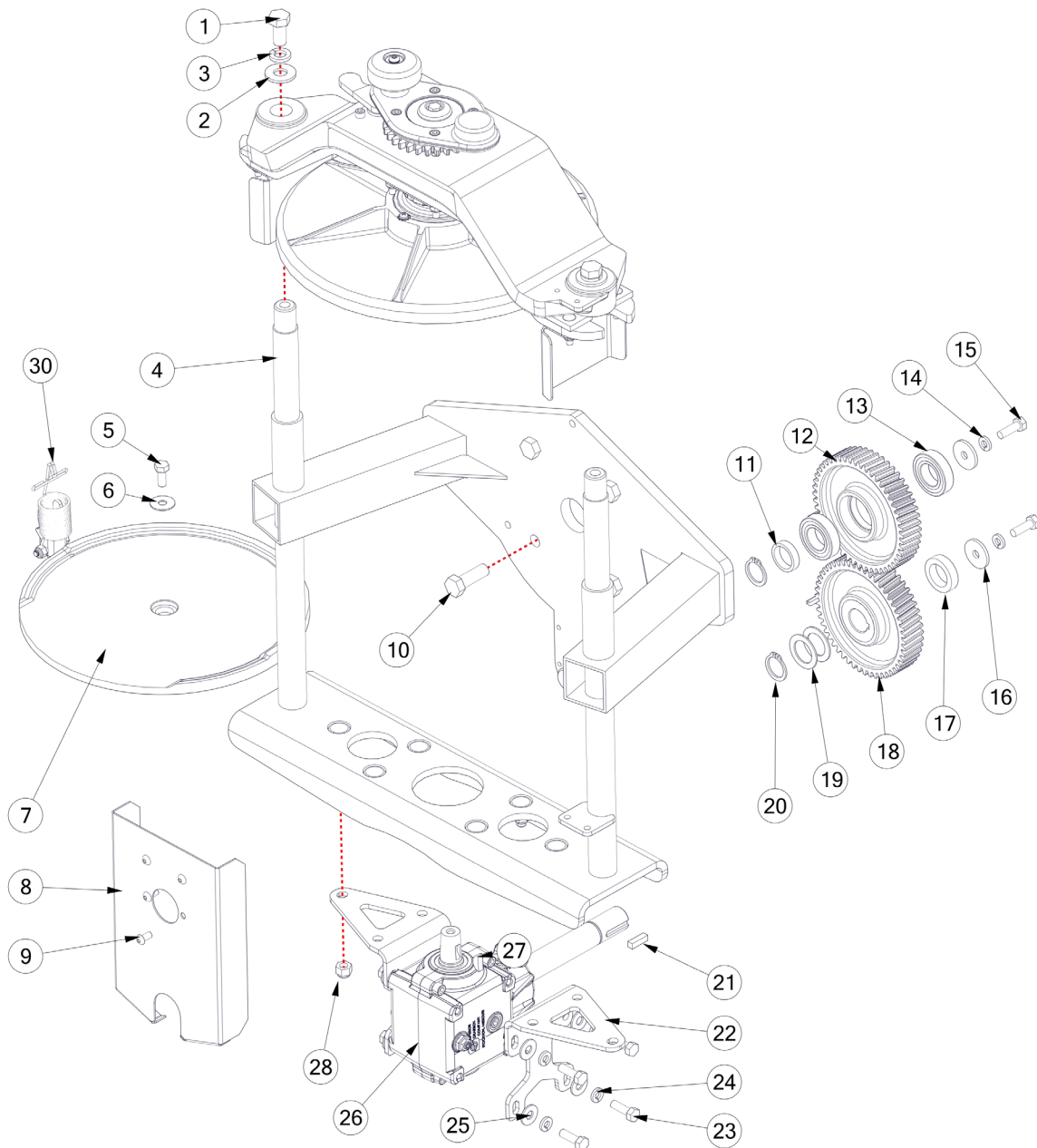
ID	Description
13	9785464 GEARBOX, RIGHT ANGLE SPEED REDUCER - 5925
14	9785585 KEY, SQUARE .250 X 4.125
15	9785587 WASHER, FLAT .512 ID X 1.456 OD X .118 THK
16	9786714 MOUNT, GEARBOX AND GEAR - 5025
17	9786713 BRACE, GEARBOX - 5025-5925
18	9786723 SHAFT, TUMBLE, 3 GEAR - 5025
19	9786711 GEAR, HELICAL, 76 TOOTH - 5025, RH - 5025
20	9788029 Screw Hex 5_16 X 1 GR5 Zinc Patch
21	9780182 Nut, Nylock 5_16-18
22	9788042 SCREW, HEX 1_2-13 X 1.25 GR5 Zinc Patch
23	9786712 BEARING, FLANGE - INSIDE, 1.5 ID

PART NUMBERS LISTED MAY ONLY BE AVAILABLE IN KIT FORM OR AS AN ASSEMBLY

Exploded Views, Continued...

...Exploded Views, Continued

8.4 Rotating Frame Assembly, Lower Section



BOM ID	Description
1	9780221 SCREW HEX 1_2-13 X 1.00 GR8 ZP Patch
2	9688200 Washer, Flat, 1/2
4	9786757 Weldment, Clamp Frame, 5025 Style 3 Gear
5	9788084 Screw Hex 5_16 X 3_4 GR8 ZP Patch
6	9787320 WASHER, FLAT, SS, .344 X 1.00 X .050 THK
7	6786508 BOTTOM PLATE KIT 5025
8	9786718 GUARD, GEARS - 5025
9	9783365 Screw Button 1_4 x .5
10	9782154 Screw Hex 1_2 X 1_50
11	9786744 SPACER, 1.000 ID X 1.25 OD, .305 LONG, 5025
12	9786810 GEAR, HELICAL, LH, 8DP, 38 TOOTH, MOLDED
13	9785467 BEARING, RADIAL BALL 25 MM X 47 MM X 12 MM
14	9760521 Washer 5_16 Lock, Split
15	9788029 Screw Hex 5_16 X 1 GR5 Zinc Patch
16	9784441 Washer, Fender 5_16

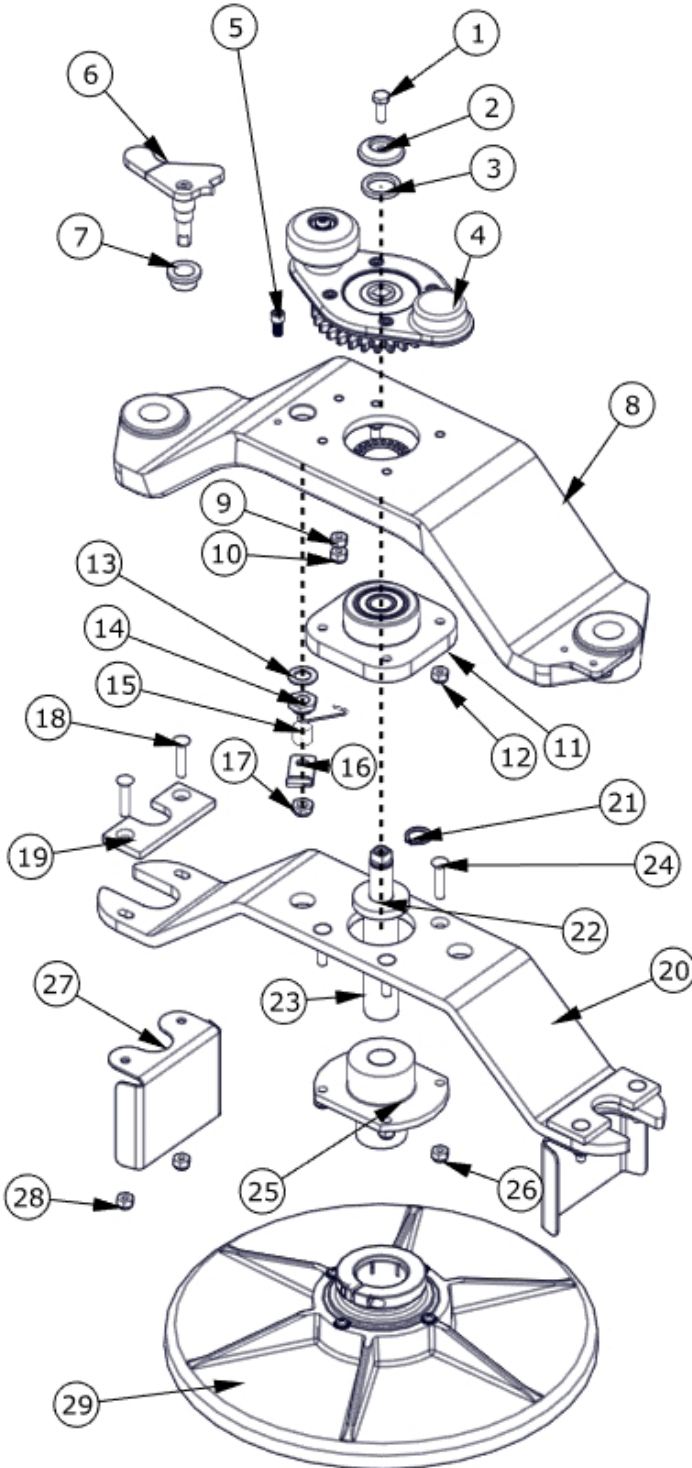
BOM ID	Description
17	9786731 SPACER, 1.005 ID X 1.50 OD X .38 LONG
18	9786811 GEAR, HELICAL, RH 8DP, 38 TOOTH, MOLDED
19	9786728 WASHER, SHIM, 1.005 ID X 1.50 OD
20	9786725 RETAINING RING, EXTERNAL, HD, 1.00 SHAFT
21	9786442 KEY, SQUARE .250 +.000 -.002 X .88 LG
22	9786743 BRACKET, GEARBOX SUPPORT - 5025 IN 5925
23	9788029 Screw Hex 5_16 X 1 GR5 Zinc Patch
24	9760521 Washer 5_16 Lock, Split
25	9100023 WASHER, FLAT 5_16 USS
26	6787325 KIT, 5025 RIGHT ANG GEAR BOX REPLACEMENT
27	9785481 KEY, WOODRUFF, NO. 806, FLAT BOTTOM
28	9780193 NUT, NYLOCK 3 8-16
30	9782872 SPRING, BAIL, EXTENSION - 5020

PART NUMBERS LISTED MAY ONLY BE AVAILABLE IN KIT FORM OR AS AN ASSEMBLY

Exploded Views, Continued...

...Exploded Views, Continued

8.5 Rotating Frame Assembly, Upper Section



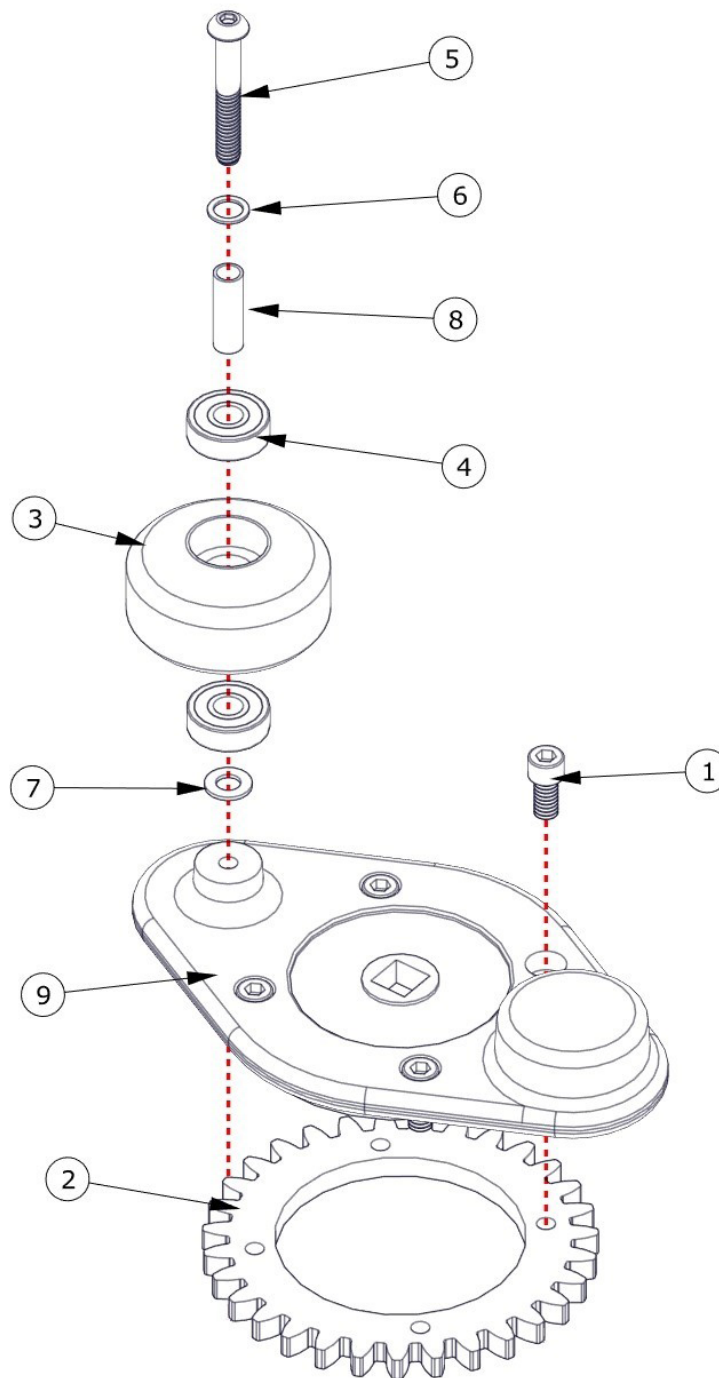
BOM ID	Description
1	9788088 Screw Hex Hd 1_4-20x0.75 GR8 ZP Patch
2	9787545 SPACER, HANDLE TOP - 5025
3	9787546 O-RING, SQUARE, VITON, DASH 212
4	6787542 Assy, Handle, Crank
5	9788026 Screw Socket Hd 1_4-20x0.50 Patch
6	6784490 Lever, Ratchet Pawl-KIT
7	9787051 BUSHING, BRONZE FLANGE
8	9786716 SUPPORT, TOP, LEADSCREW 5025
9	9654100 Nut 1_4-20
10	9780343 Nut 1_4-20 Nylon Lock
11	6783940 Brg Housing Assy, Double Row Ball Brg
12	9780343 Nut 1_4-20 Nylon Lock
13	9783963 SHIM .515 X .875 X .053
14	9783962 Nut 1_2-20 Nylon Lock Thin Jam
15	9783960 SPRING, TORSION LH
16	9784488 Plate, Spring
17	9783951 Nut, 3_8-16 Jam Nylon Lock
18	9782331 Screw, flat head 1_4 X 1.25
19	9783936 Guide, Alignment, Plastic
20	9783934 Bar, Clamp Guide
21	9784100 Ring, Retaining- External
22	9784892 WASHER, THRUST, THICK - 5025
23	6787543 Clamping Screw-KIT
24	9782331 Screw, flat head 1_4 X 1.25
25	9786720 Hub, Acme
26	9780343 Nut 1_4-20 Nylon Lock
27	9786753 GUARD, VERTICAL SLIDE - 5025
28	9780343 Nut 1_4-20 Nylon Lock
29	6786702 Top Plate Assembly

PART NUMBERS LISTED MAY ONLY BE AVAILABLE IN KIT FORM OR AS AN ASSEMBLY

Exploded Views, Continued...

...Exploded Views, Continued

8.6 Crank Handle



ID	Description
1	9788026 Screw Socket Hd 1_4-20x0.50 Patch
2	9783950 Gear, Ratchet
3	9784628 WHEEL, CRANK HANDLE - 5025
4	9784629 BEARING, RADIAL BALL, DOUBLE SHIELDED
5	9788025 Screw Button Hd 1_4-20x1.75 Patch

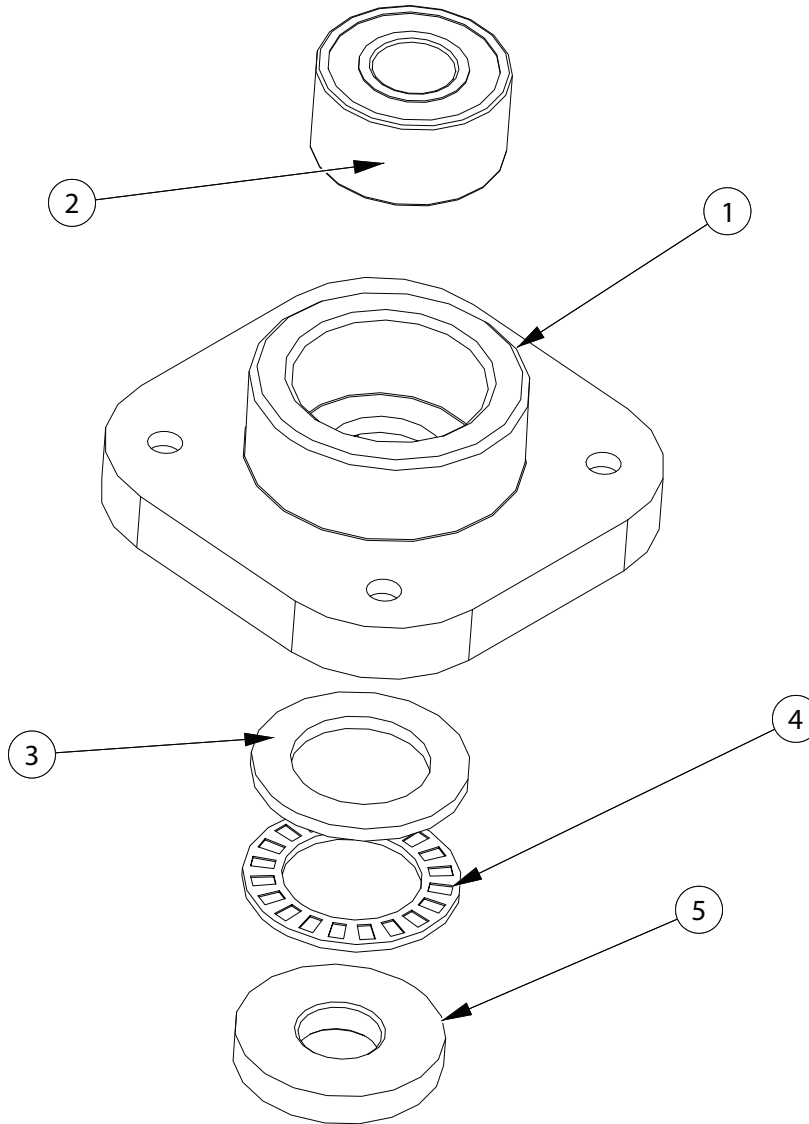
ID	Description
6	9784633 WASHER, SHIM, 5_16 X .030 THK
7	9784729 WASHER, SHIM 1_4
8	9785283 BUSHING, STEEL - 5025 CRANK HANDLE
9	9787063 HANDLE, CRANK, CAST - 5025

PART NUMBERS LISTED MAY ONLY BE AVAILABLE IN KIT FORM OR AS AN ASSEMBLY

Exploded Views, Continued...

...Exploded Views, Continued

8.7 Double Row Bearing



ID	Description
1	9783941 Brg Housing, Lead Screw, Double Ball Brg
2	9783942 Bearing, Double Row Radial Ball, 17mm Bore
3	9783943 Washer, Thrust Bearing, 1.125 Bore

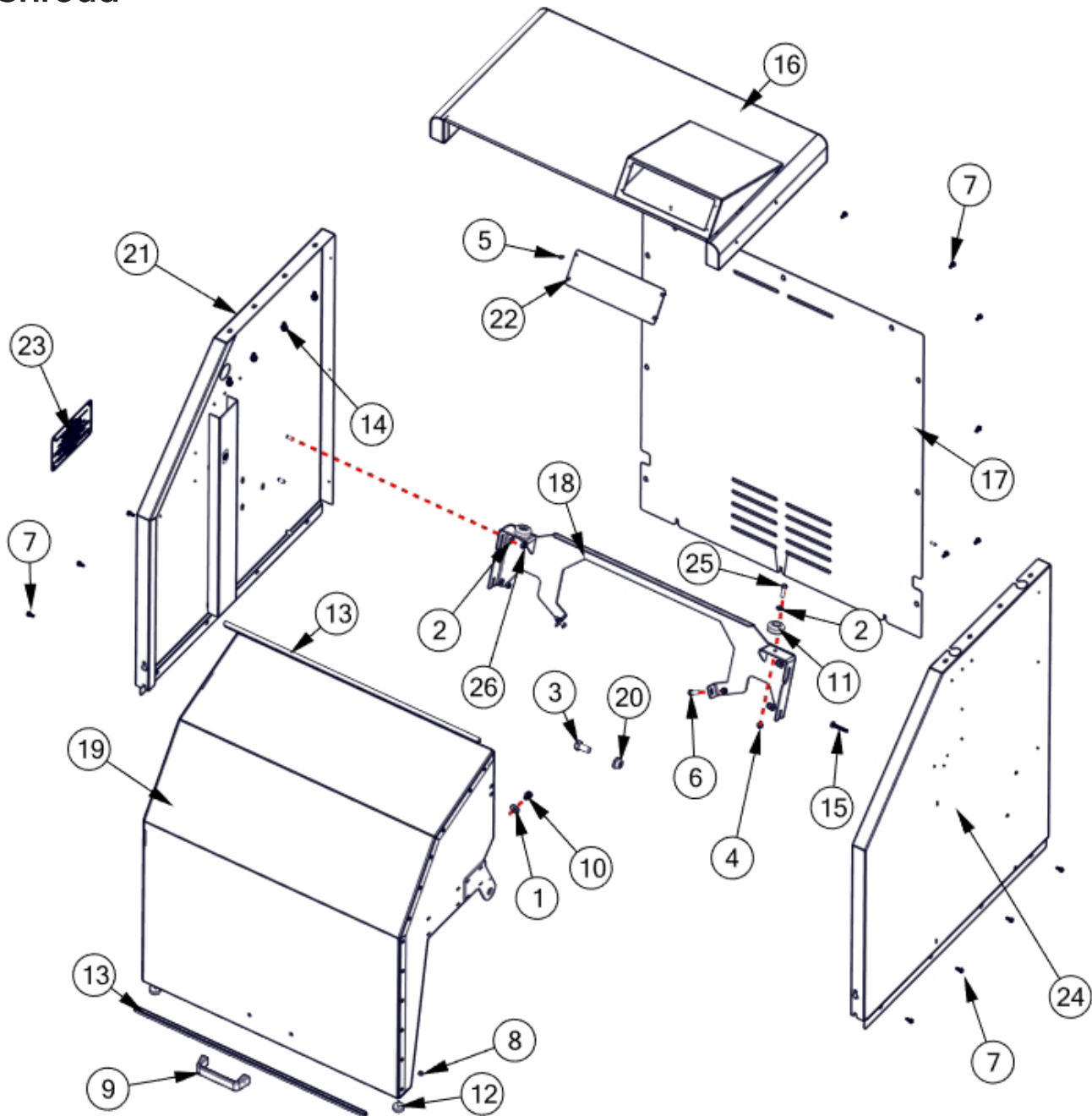
ID	Description
4	9783944 Cage, Thrust Bearing, 1.125 Bore
5	9784892 WASHER, THRUST, THICK - 5025

PART NUMBERS LISTED MAY ONLY BE AVAILABLE IN KIT FORM OR AS AN ASSEMBLY

Exploded Views, Continued...

...Exploded Views, Continued

8.8 Shroud



ID	Description
1	9100023 WASHER, FLAT 5 16 USS
2	9760514 Washer 1 4 SAE .281 ID
3	9780221 SCREW HEX 1 2-13 X 1.00
4	9780343 Nut 1 4-20 Nylon Lock
5	9781367 Screw Hex Thd Form #8 X .50
6	9788039 Screw, Hex 1 4 X 1 GR8 ZP Patch
7	9783385 Screw, #10-32 SHWH Tap
8	9783426 Nut, Keps #10-32
9	9783987 Handle, Door - 5025
10	9788087 Screw Hex 5 16-18 X .50 GR5 Zinc Patch
11	9783994 Bumper, Recess
12	9785137 BUMPER, RUBBER - THREADED STUD
13	9785773 SEAL, DOOR - 5925
14	9785779 SCREW, SERRATED FLANGE HEX HD, .25-20 X .50 LG

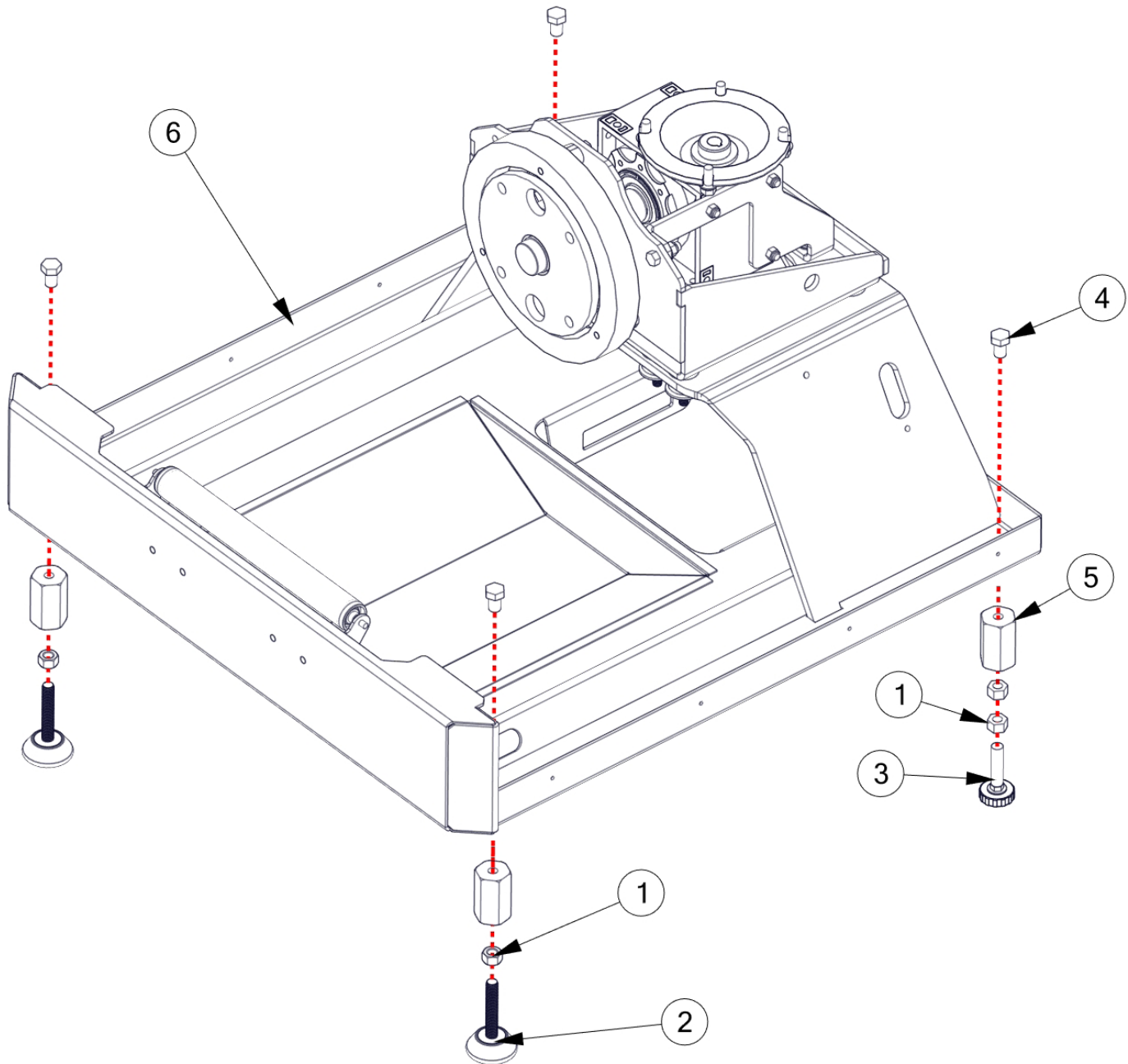
ID	Description
15	9785786 SCREW, HEX CAP 1 4-20 X 1.50 FULL THD
16	9786698 PANEL, TOP, 5025-5925
17	9786699 PANEL, BACK, 5025 - 5925
18	9786722 STOP, DOOR, ONE PIECE - 5925-5025
19	9786734 DOOR WELDMENT - 5925-5025
20	9786732 BEARING, BRONZE, FLANGED, .50 ID
21	9786841 PANEL, SIDE, LEFT - 5925-5025 EX PROOF
22	9786848 COVER PLATE, 5025X1-5925X1
23	1784152 Nameplate, Metal - 5025-X1
24	9786736 PANEL, SIDE, RIGHT - 5925-5025
25	9788039 Screw, Hex 1 4 X 1 GR8 ZP Patch
26	9780343 Nut 1 4-20 Nylon Lock

PART NUMBERS LISTED MAY ONLY BE AVAILABLE IN KIT FORM OR AS AN ASSEMBLY

Exploded Views, Continued...

...Exploded Views, Continued

8.9 Feet



ID	Description
1	9781711 NUT, 1_2-13
2	9785722 FOOT, NON SKID, LEVELING - 1_2-13
3	9785721 FOOT, GLIDER - 1_2-13

ID	Description
4	9788059 SCREW HEX 1/2-13 X 1.00 ZP PATCH
5	9786765 RISER, HEX, FLOOR - 5025 - 5925
6	9786804 BASE WELDMENT - 5925-5025

PART NUMBERS LISTED MAY ONLY BE AVAILABLE IN KIT FORM OR AS AN ASSEMBLY

Exploded Views, Continued...

9. Ordering

Replacement Parts

HOW TO ORDER REPLACEMENT PARTS

Replacement parts can be ordered from Radia by telephone, fax, or email:

RADIA

800-221-1083
763-533-2969
763-533-0015 (FAX)
orders@radiaproducts.com

If you need help in determining the proper part(s) to order, please call Customer Care at 1-800-221-1083. Always indicate the Model and Serial numbers of the machine when ordering replacement parts.

GENERAL PARTS REPLACEMENT POLICIES

While your machine is under warranty, do not attempt on-site repair or parts replacement without first contacting RADIA to protect your warranty. After the warranty expires, replacement parts and recommendations for on-site servicing are available from RADIA. Please contact Customer Care for assistance.

RESTOCKING FEE

A restocking fee will be charged on all unused parts which are returned.



For instructional "How To" videos please visit:
www.radiaproducts.com



10. Warranty

Equipment Covered Under This Warranty

05025X-1

Warranty

Radia warrants equipment manufactured by it and bearing its name to be free from defects in material and workmanship.

EXCEPT FOR THE WARRANTY SET FORTH HEREIN, RADIA MAKES NO WARRANTY WHATSOEVER WITH RESPECT TO THE EQUIPMENT, INCLUDING ANY (a) WARRANTY OF MERCHANTABILITY; (b) WARRANTY OF FITNESS FOR A PARTICULAR PURPOSE; OR (c) WARRANTY AGAINST INFRINGEMENT OF INTELLECTUAL PROPERTY RIGHTS OF A THIRD PARTY; WHETHER EXPRESS OR IMPLIED BY LAW, COURSE OF DEALING, COURSE OF PERFORMANCE, USAGE OF TRADE OR OTHERWISE.

This warranty applies only when the equipment is installed, operated and maintained in accordance with written Radia instructions as appearing in the owners' manuals.

This warranty does not cover, and Radia shall not be liable for, any malfunction, damage, or wear caused by faulty installation, misapplication, abrasion, corrosion, inadequate or improper maintenance, negligence, accident, tampering or substitution of non-Radia component parts, modification or use for non-intended purposes. Nor shall Radia be liable for malfunction, damage or wear caused by the incompatibility of Radia equipment with structures, accessories, equipment, or materials not supplied by Radia.

Subject to the limitations set forth above, Radia shall (i) repair or replace the equipment (or the defective part) or (ii) credit or refund the price of such equipment. Costs of labor and transportation for service of machines under this warranty will also be covered during the warranty period if Radia elects to repair or replace the equipment. Normal ground freight will be covered for replacement parts sent within the warranty period. For customers outside of the US and Canada, the warranty is for parts only. Ground or common carrier ground freight will be covered for the return of defective items only. In no case shall Radia's liability exceed the amount of the purchase price.

*All warranty repairs must be executed by a Radia Authorized Service Center or warranty will be voided.

THE REMEDIES SET FORTH HEREIN ARE PURCHASER'S SOLE AND EXCLUSIVE REMEDY and RADIA'S ENTIRE LIABILITY FOR ANY BREACH OF THE LIMITED WARRANTY SET FORTH HEREIN.

Please contact your Radia Relationship Manager at 800-221-1083 for specific questions regarding specific questions regarding warranty terms.

For sales or service, please contact

RADIA
Attn: Customer Service Department
14900 21st Ave N
Plymouth, Mn 55447
USA

U.S. Telephone: 800.221.1083
International Telephone: 763.533.2969
Fax: 763.833.0015
E-mail: info@radiaproducts.com

www.radiaproducts.com



For instructional "How To" videos please visit:
www.radiaproducts.com

